



StreetLight Insight Big Data Program Updates

SCAG Modeling Task Force

March 25, 2025

WWW.SCAG.CA.GOV



AGENDA

1. AI/Big Data Research Project Introduction
2. SCAG StreetLight Insight Updates
3. Biannual Usage Assessment Recap



AI/BIG DATA RESEARCH PROJECT

Introduction, timeline, and deliverables

AI/Big Data Research Project

- **Objectives:** explore and leverage AI and Big Data analytic methods and techniques for regional planning and decision-making
- **Tasks:** literature review, internal survey, whitepaper
- **Deliverables:** research materials and literature review, whitepaper

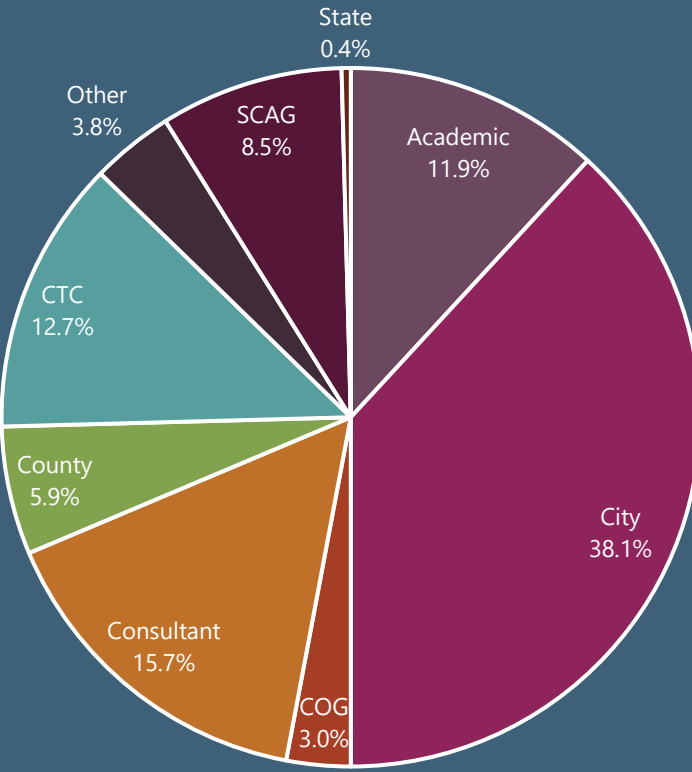


SCAG STREETLIGHT INSIGHT®: UPDATES

Updates on the Platform's Usage, Trends, and Use Cases

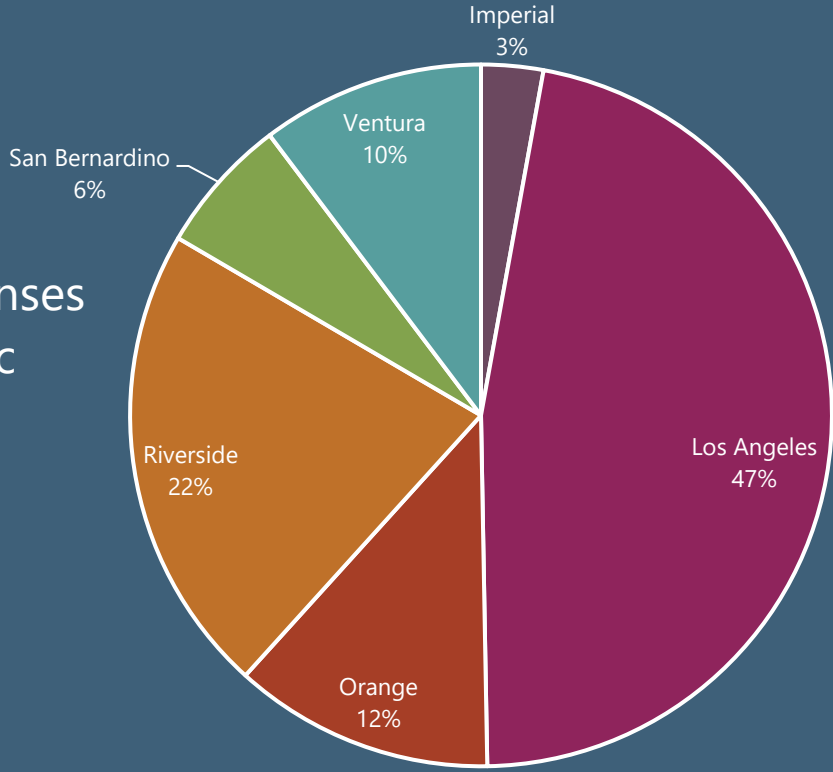
SCAG StreetLight Insight User Updates

Users by Agency Type



- **210/210** General Licenses
- **29** Academic Licenses (unlimited)

License Allocation Across the Region

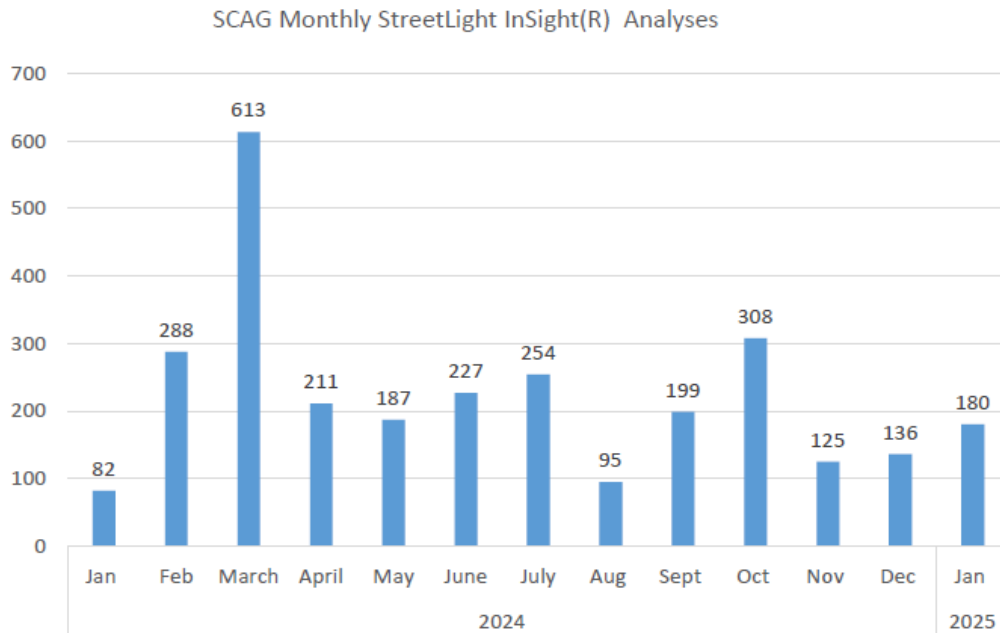


Newly Onboarded:

- South Bay COG
- LA County Public Works
- City of Burbank
- LA Metro
- Port of Long Beach
- UC Irvine
- USC
- SBCTA
- Omnitrans
- Long Beach Transit

Analysis Summary Highlights

SCAG StreetLight InSight® Summary



January 2025 Example Projects/Analyses:

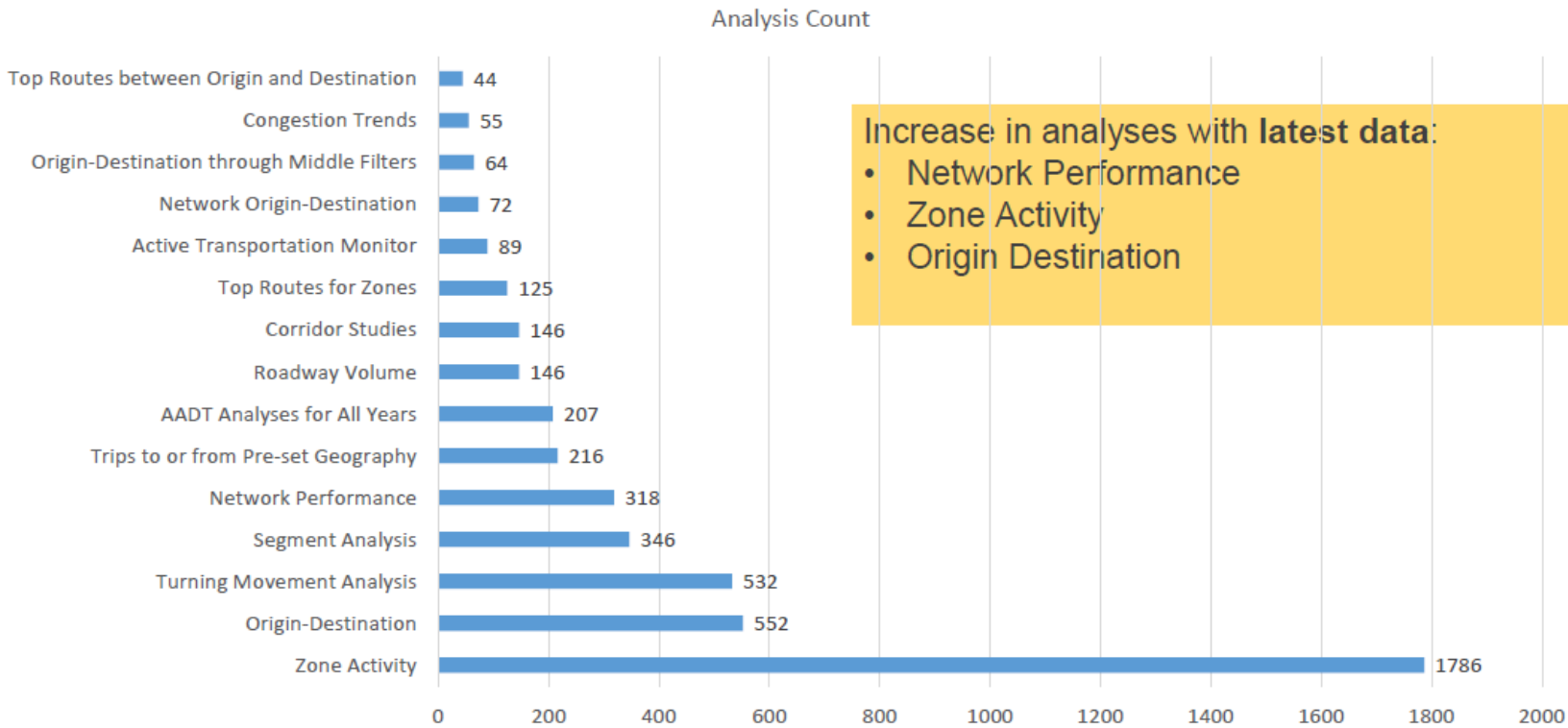
- Truck ODs by County – SCAG
- Corridor Studies.
 - OCTA – 405
 - Burbank – Olive Ave Bridge
 - Snyder Rd @ 115 – Imperial County
- AADT
- Intersection Studies/TMC – Riverside, Amarillo
 - New multi TMC - OCTA
- Speed & Volumes – LA (city), Temecula
- Vehicle Trips - Camarillo

Users have
conducted
4,698
analyses
since
contract
began

Usage by Analysis Type

StreetLight InSight® Usage by Analysis Type

End of January 2025



Increase in analyses with latest data:

- Network Performance
- Zone Activity
- Origin Destination

Zone activity, origin-destination, and turning movement analysis are top 3 analysis types



BIANNUAL USAGE ASSESSMENT SUMMARY

January 2025 StreetLight Usage Assessment

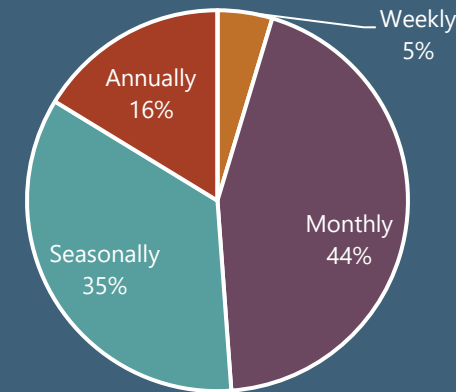
Biannual Usage Assessment

- **Purpose:** to maximize engagement and use of the platform, SCAG's StreetLight Insight Usage Policy was enacted in July 2024 with the goal of identifying inactive users to allow staff to open licenses for new stakeholders
- Assessment takes place every **July** and **January** through end of contract
- To maintain active status, users must complete **2** of the following over the past 6-month period:
 - Conduct a minimum of **1 analysis** on the platform
 - Log into the platform at least **2 times**
 - Complete **1 biannual usage survey**

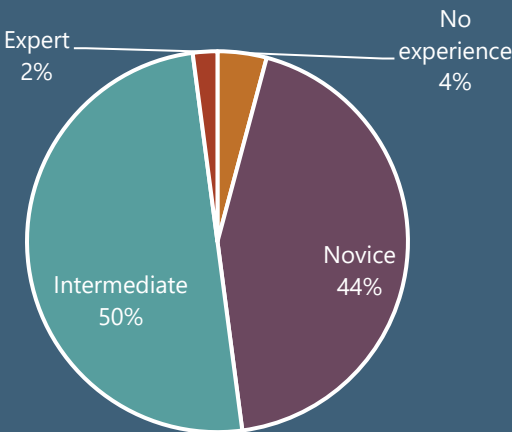
Biannual Usage Assessment Survey

- Distributed January 13-31, 2025, to all active StreetLight users
- 48 responses

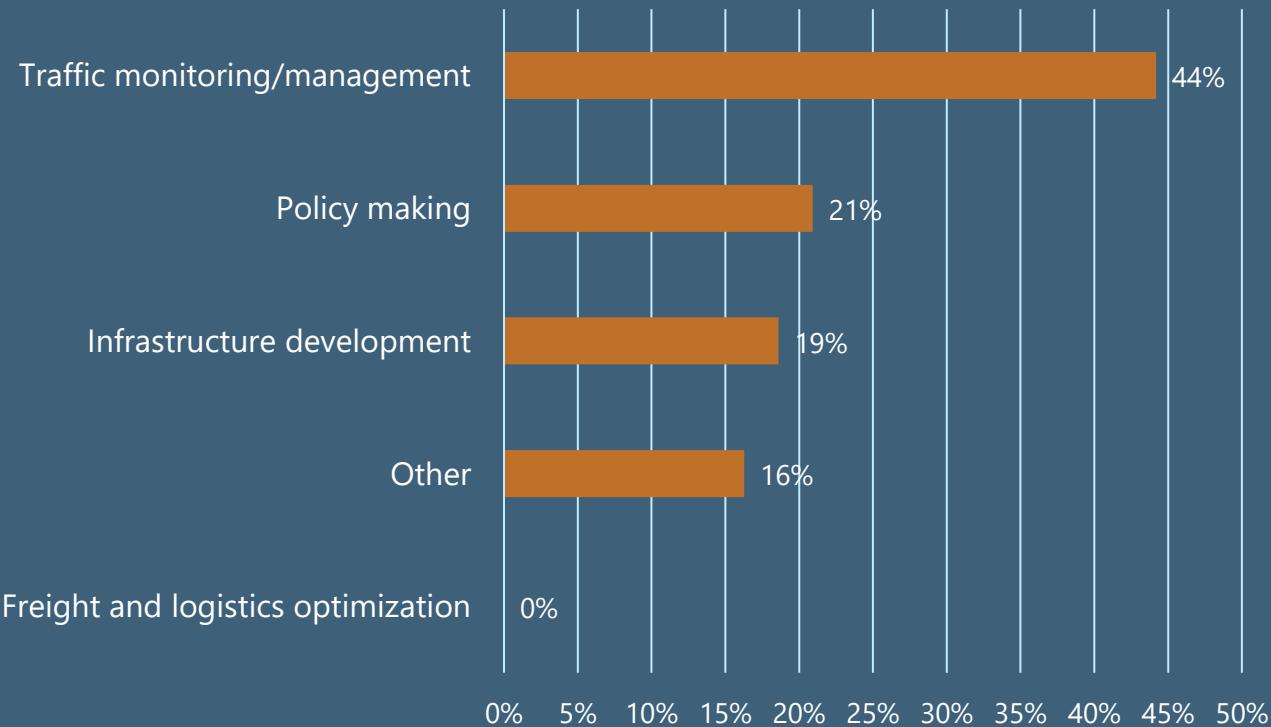
Frequency of Platform Use



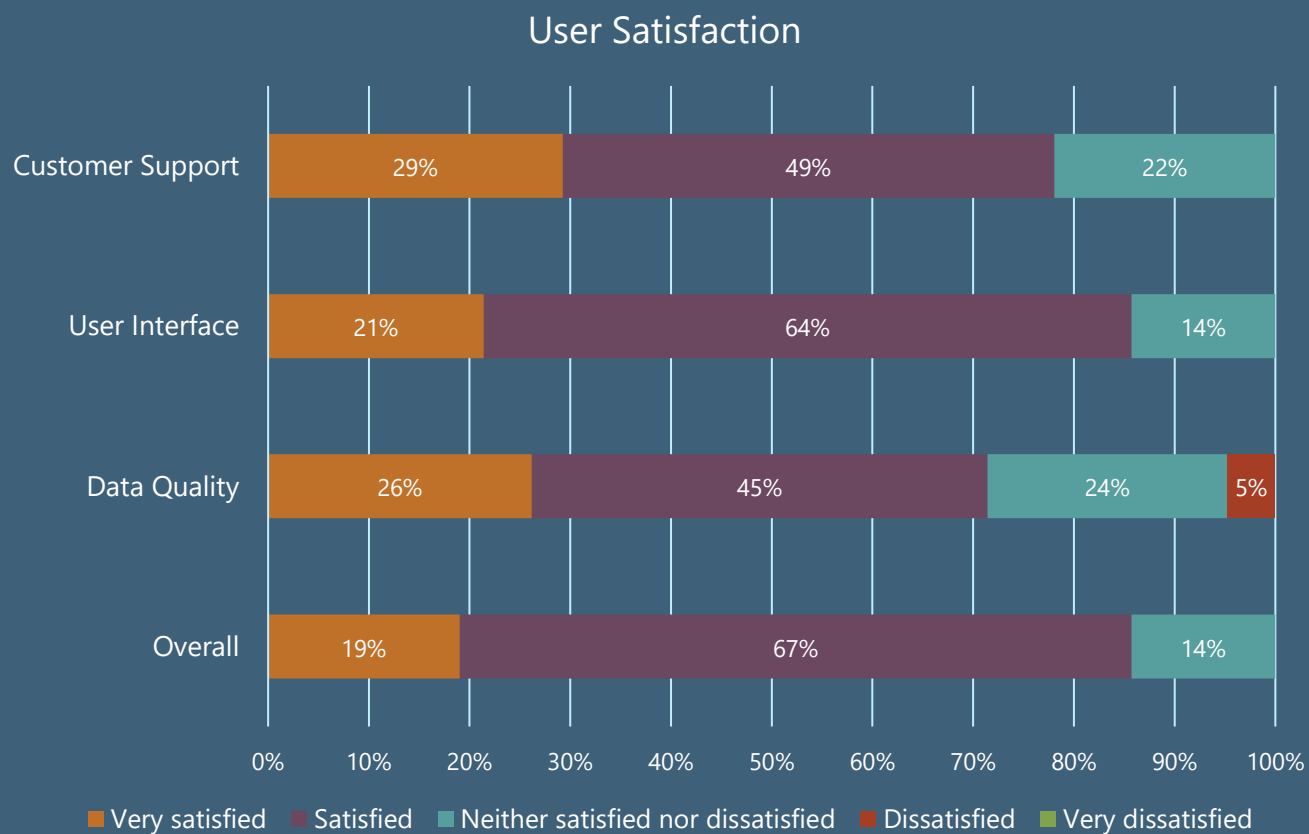
Level of Experience



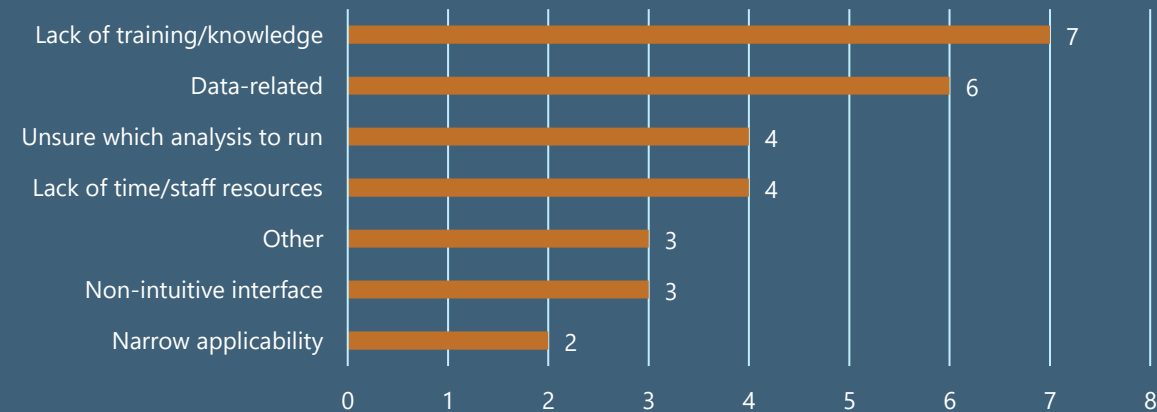
Primary Purpose



Biannual Usage Assessment Survey



What are some barriers that prevent you from using StreetLight more?



How can the platform be improved to support decision-making?

- Data improvements
- Live assistance from StreetLight
- Formal map creation and export features
- Tools for novice users/AI assistant
- Simplified/easier to use interface
- Enhanced training resources

Usage Information

• User Status Summary

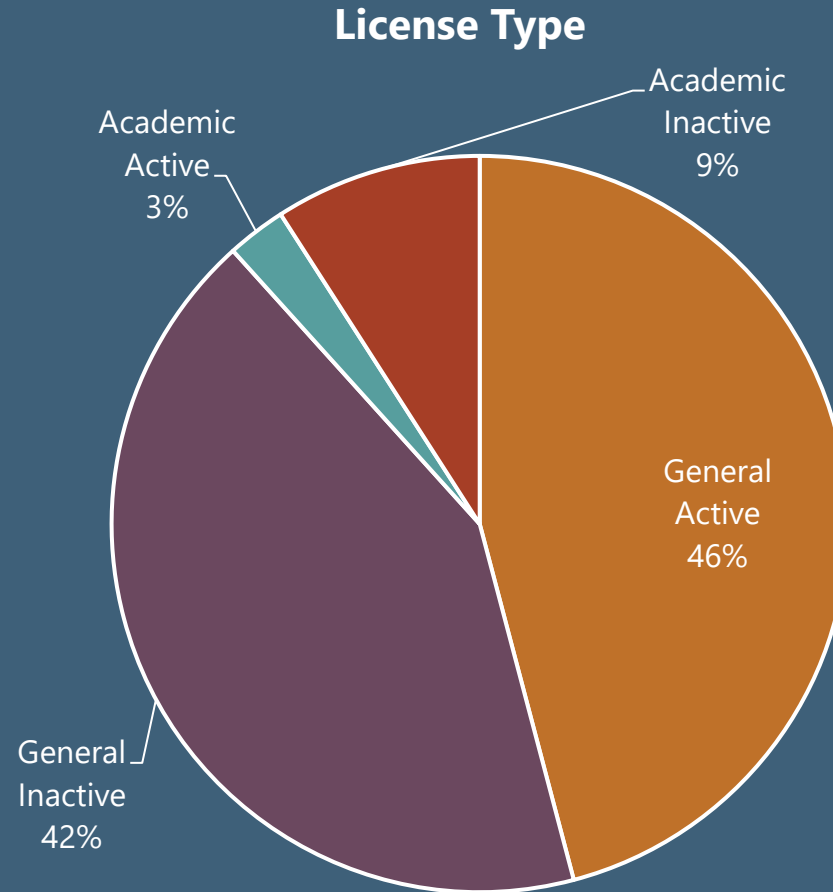
- 52% inactive
- 48% active

• Log Ins

- Median: 12
- Max: 190
- 9% zero logins
- 70% logged in at least once

• Analyses

- Median: 2
- Max: 887
- 37% zero analyses
- 43% ran at least one analysis



Contact Information

- mcdaniel@scag.ca.gov
- LIST@scag.ca.gov



SURVEY ON USE OF AI IN TRANSPORTATION MODELING AND PLANNING

Thank you for your participation!

Survey on Use of AI in Transportation Modeling and Planning

- Contact information
 - Name
 - Organization
 - Email address

Survey on Use of AI in Transportation Modeling and Planning

- How familiar are you with AI applications in transportation modeling and planning?
 - Very familiar – I actively use AI in my work
 - Somewhat familiar – I have explored AI but do not use it regularly
 - Not very familiar – I know about AI but have not used it
 - Not familiar at all

Survey on Use of AI in Transportation Modeling and Planning

- In what areas of transportation modeling and planning do you currently use or see AI being most beneficial? Select all that apply.
 - Travel demand modeling and forecasting
 - Traffic operations and congestion management
 - Automated data processing and analytics
 - Public transit service optimization
 - Land use and scenario planning
 - AI-driven visualization and reporting
 - Other (please specify)

Survey on Use of AI in Transportation Modeling and Planning

- What are the biggest barriers to adopting AI for your agency or firm? Select up to three.
 - Lack of technical expertise or training
 - Limited access to high-quality data
 - Budget or resource constraints
 - Concerns about AI model transparency and reliability
 - Institutional or regulatory challenges
 - No clear use case for AI in our work

Survey on Use of AI in Transportation Modeling and Planning

- How would you describe your agency's or firm's overall stance on AI adoption?
 - Actively using and integrating AI into workflows
 - Exploring AI but not yet implementing it
 - Monitoring AI developments but hesitant to adopt
 - No active interest in AI adoption

Survey on Use of AI in Transportation Modeling and Planning

- Have you received any formal training on the use of AI in regional modeling and/or planning?
 - Yes
 - No
 - If yes, please specify the name of the training you received

Survey on Use of AI in Transportation Modeling and Planning

- Does your agency have an adopted AI policy?
 - Yes
 - No
 - Not sure