



Mobility Hubs

Tuesday, March 18, 2025

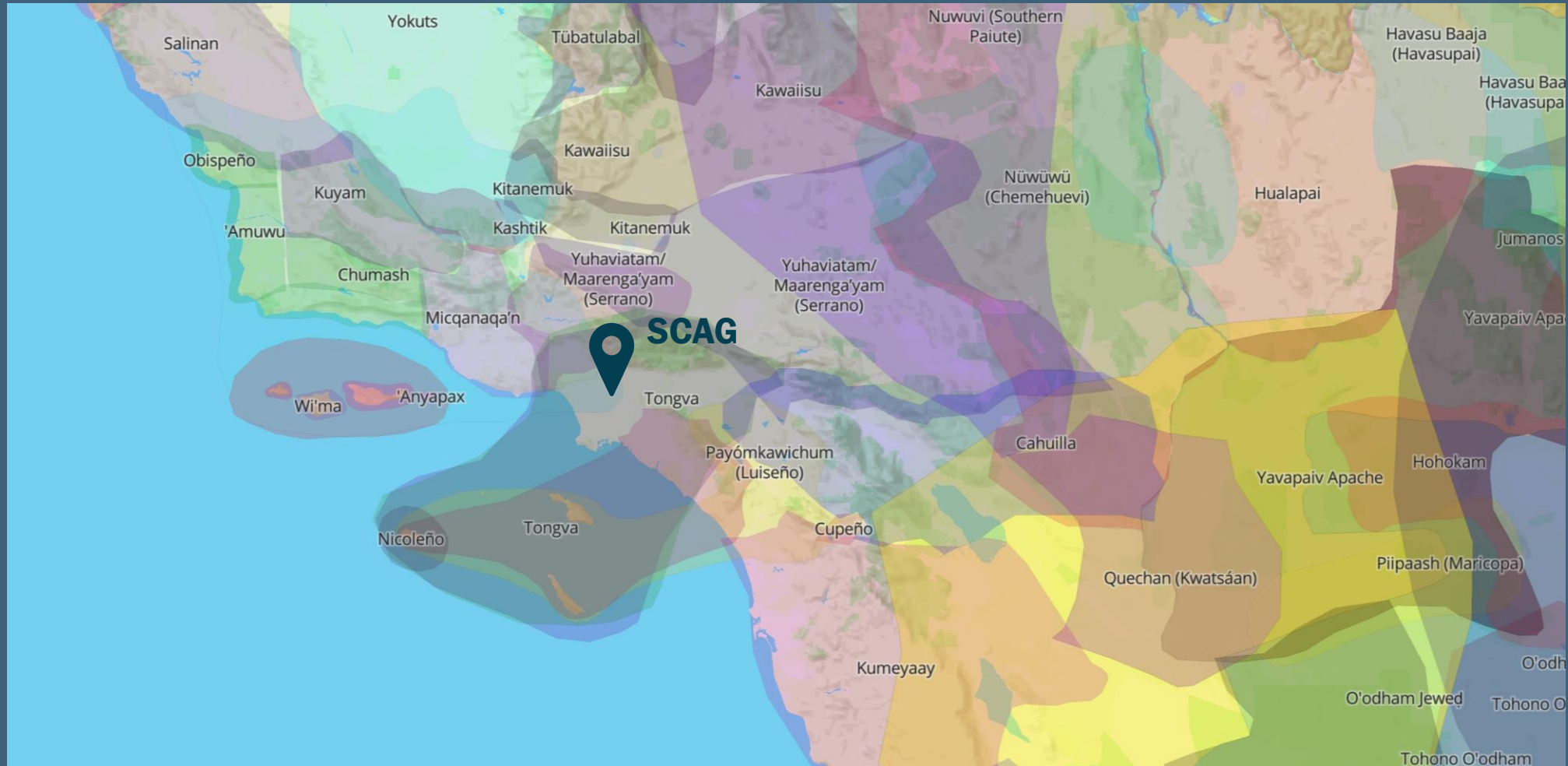


WWW.SCAG.CA.GOV

Housekeeping

1. Meeting length: 1.5 hour
2. This meeting is being recorded
3. All participant lines will be muted
4. At the end, there will be a Q&A session
5. If you have a question during the presentation, please type it into the chat box or press the "raise hand" function
6. We will log all questions and then voice a selection at the end of the presentation
7. Closed captioning can be turned on by clicking "Show captions" on the Zoom ribbon
8. A recording of this webinar and the PowerPoint slides will be available on the SCAG website. We will send a link to everyone who has registered after the event
9. Please fill out our survey at the end to help us improve future Toolbox Tuesdays!

Land Acknowledgement



Agenda

- SCAG's Mobility Hubs Design & Implementation Guide
- Case Studies
 - Riverside Transit Agency's Vine Street Mobility Hub
 - Cal State Dominguez Hills On-Campus EV Carshare Mobility Hub
 - LADOT & Tranzito Mobility Hub Program
- Polls



REGIONAL MOBILITY HUB STRATEGY

Sirinya Matute, SCAG Senior Regional Planner

What are Mobility Hubs?

Physical places where people can seamlessly connect with multiple modes of transportation in a safe, comfortable, and accessible environment.

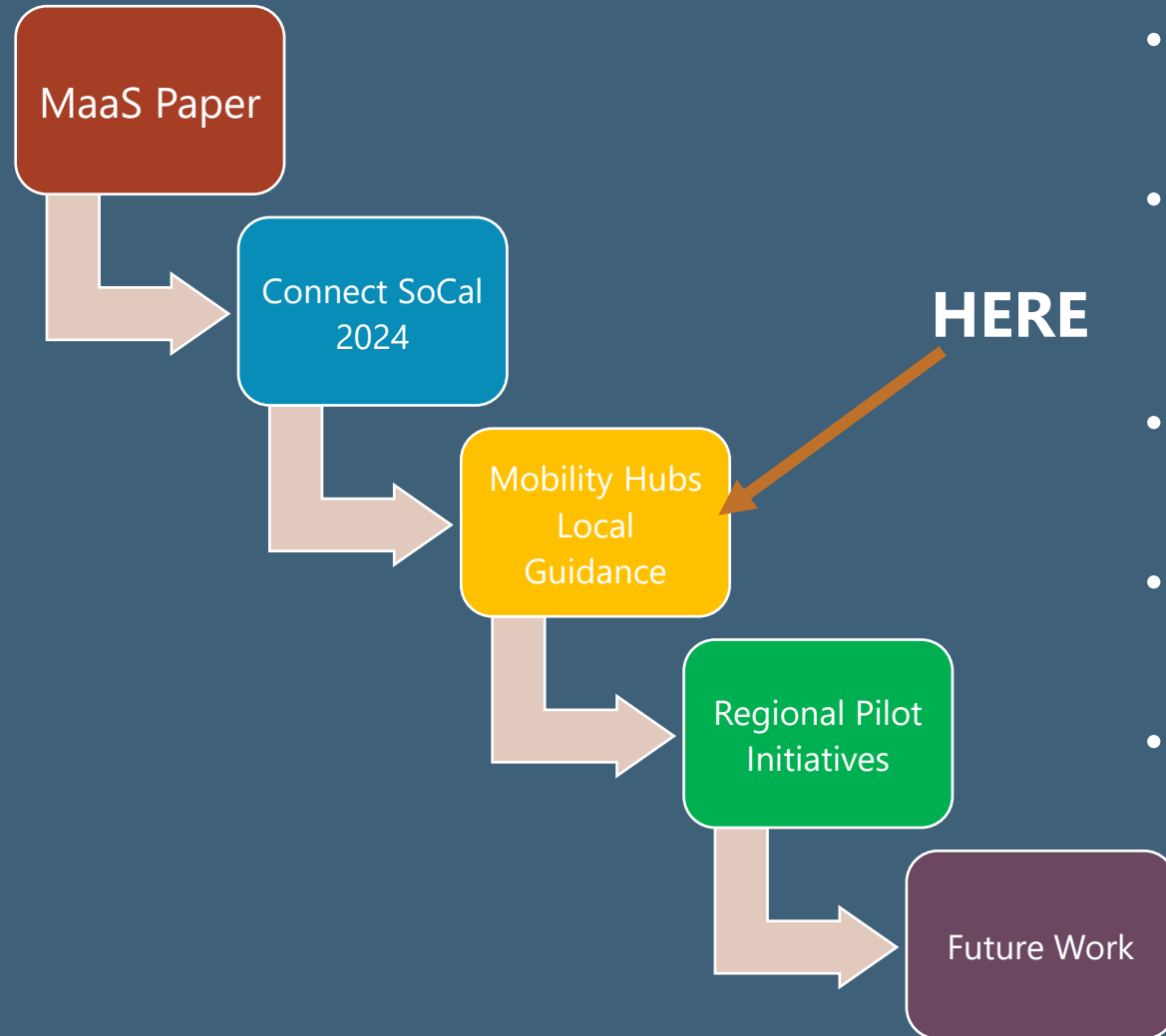


Why Mobility Hubs?

- Support safe and convenient transfer between transportation modes
- Provide first/last mile connections to transit
- Provide travel options, esp. for those with limited mobility options
- Promote mode shift
- Motivate GHG reductions
- Placemaking
- Reduce new VMT from land development



SCAG's Regional Mobility Hub Strategy



- Develop Design & Implementation Guide and provide training/support.
- Coordinate with stakeholders to identify and evaluate partnership and funding opportunities.
- Position locals for success in competing for grant funding.
- Continue to refine baseline network of mobility hubs.
- Develop 1-2 Mobility Hub Pilot Projects for Regional Pilots Initiative (RPI) Program.

Mobility Hubs Typologies



Downtown Hubs



Urban Hubs



Emerging Urban Hubs



Suburban and Rural Hubs



Equity Hubs



Institutional Hubs

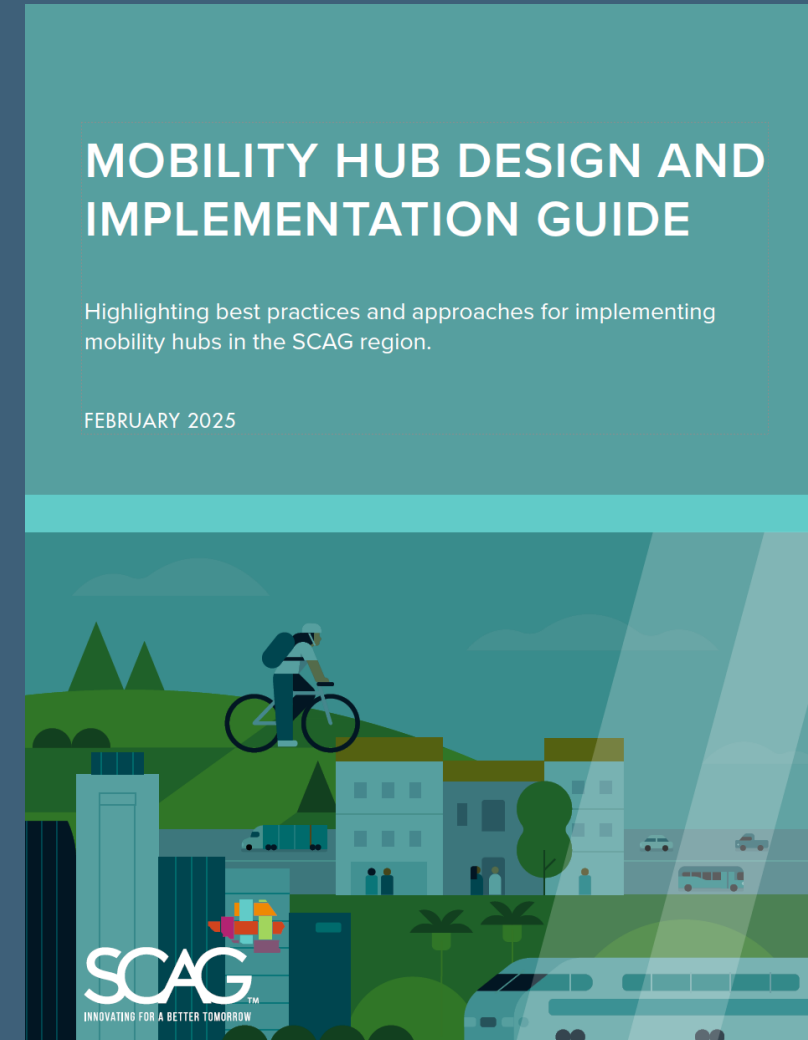
Stakeholder Engagement

- Activities included:
 - Outreach to public partners to share the vision, solicit feedback on the implementation guide, and secure long-term support for implementing mobility hubs.
 - Hosted mobility hub workshop attended by over 50+ people.
 - Launched webpage to promote mobility hub work at SCAG.



Mobility Hub Design and Implementation Guide

- Organized into three parts:
 - Plan Your Mobility Hub Network
 - Design the Hub
 - Implement the Hub
 - Funding Resources
- Priority Project Conceptual Designs
- List of SCAG's Mobility Hub priority sites
- Case Studies throughout guide
- Available at **scag.ca.gov/mobility-hubs**



Section 1. Plan Your Mobility Hub Network

Define what a mobility hub means for your community



Develop mobility hub typologies appropriate for your community



Identify mobility hub locations in your jurisdiction



Consider existing transportation conditions (e.g., bike and pedestrian infrastructure, transit ridership, transportation parking, etc.)



Develop conceptual designs and conduct community engagement



Develop an implementation strategy and program recommendations

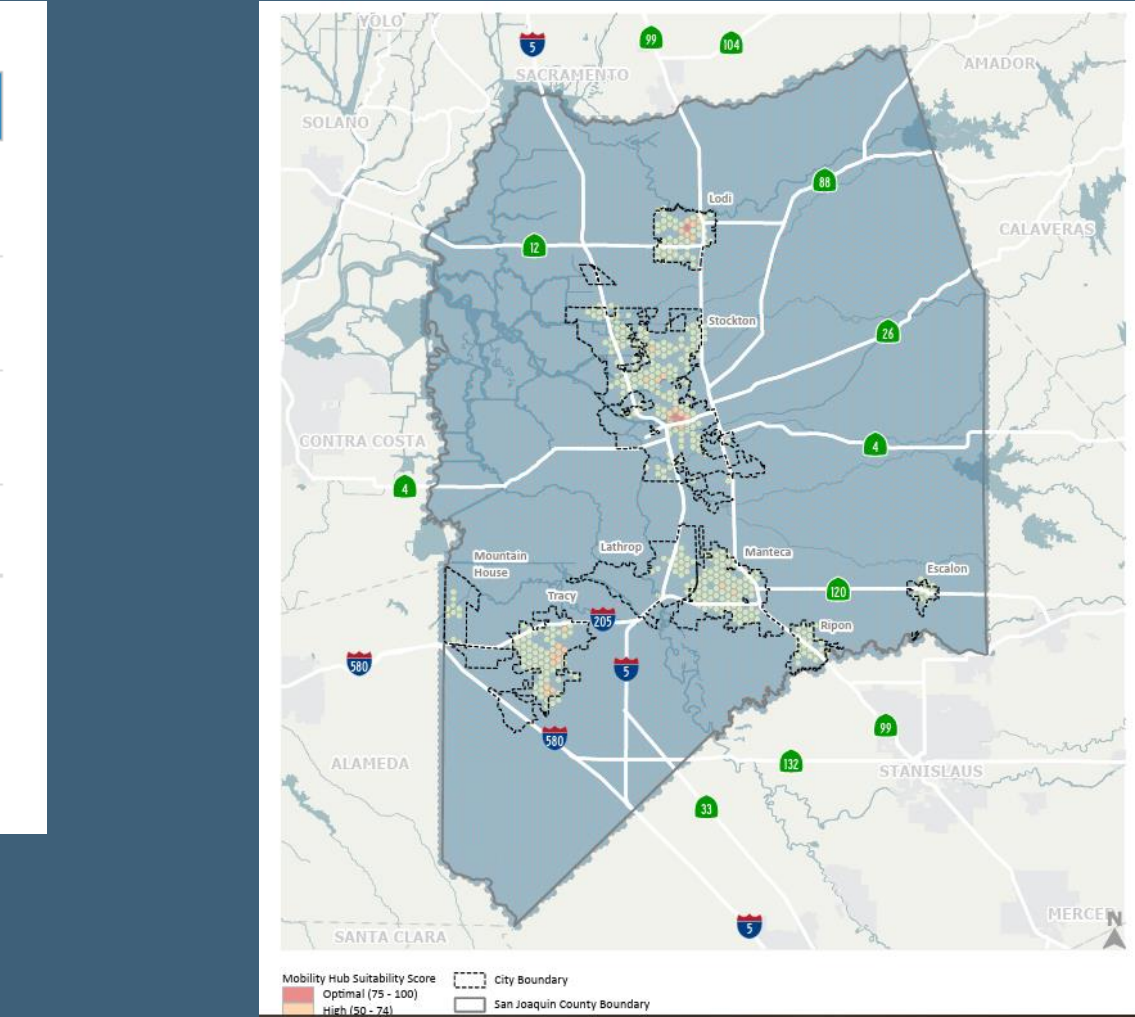
Example of Site Analysis Process

Table 16: Mobility Hub Suitability Score Categories

Mobility Hub Suitability	Mobility Hub Suitability Score	Description
Optimal	75 – 100	Locations with exceptional suitability for mobility hubs, offering the highest potential for success. These areas have strong transit networks, well-integrated bike facilities, and a built environment and land use pattern that supports sustainable transportation options.
High	50 – 74	Areas with strong potential for mobility hubs, where the built environment and land use are conducive to multimodal transportation. These locations have good transit access, bike connectivity, housing and/or employment densities that support transit use.
Moderate	25 – 49	Locations with moderate suitability for mobility hubs. These areas may have some transit and bike network access but require further infrastructure improvements or increased housing and employment densities to better support mobility hub operations.
Low	0 - 24	Areas with limited current suitability for mobility hubs. These locations may have lower transit access and densities and could benefit from further infrastructure development to better support future mobility hub operations.

Source: Fehr & Peers, November 2024.

The mobility hub suitability score is just one factor to consider when selecting a neighborhood for a mobility hub. Chapter 5 introduces a prioritization methodology that combines the suitability score with other environmental and socioeconomic factors to evaluate and prioritize potential sites for the upcoming demonstration project. This methodology can also be applied to projects beyond the planned demonstration project.



From SACOG's Mobility Hub Guide

Just as Important: Outside the Mobility Hub!

Design Guide provides guidance on these topics:

- Considering the needs of pedestrians, bicyclists, transit riders
- Safety
- Accessibility and Inclusivity
- Maintenance
- Community Integration
- Environmental Integration

Section 2. Design the Mobility Hub

				
<h2>Key Strategies</h2> <ul style="list-style-type: none"> • Create a Sense of Place • Ensure User Safety and Comfort • Incorporate Tech and Electrification • Provide resources for seamless transfers and destination-finding 	<h2>Mobility Hub Elements</h2> <ul style="list-style-type: none"> • User-Oriented Design • Community-Centered / Community-Responsive Design • Equity-Centered Design • Innovation and Asset Management Design • Cohesive Network Design 	<h2>Design Considerations</h2> <ul style="list-style-type: none"> • Access Hierarchy • Access Considerations • On-Site Safety to Minimize Conflicts • Crime Prevention • Renewable Energy • Backup Power 	<h2>Kit of Parts</h2> <ul style="list-style-type: none"> • Transit • Access • Technology • Placemaking 	<h2>Conceptual Designs</h2> <ul style="list-style-type: none"> • Designs illustrate how desired amenities can fit together cohesively

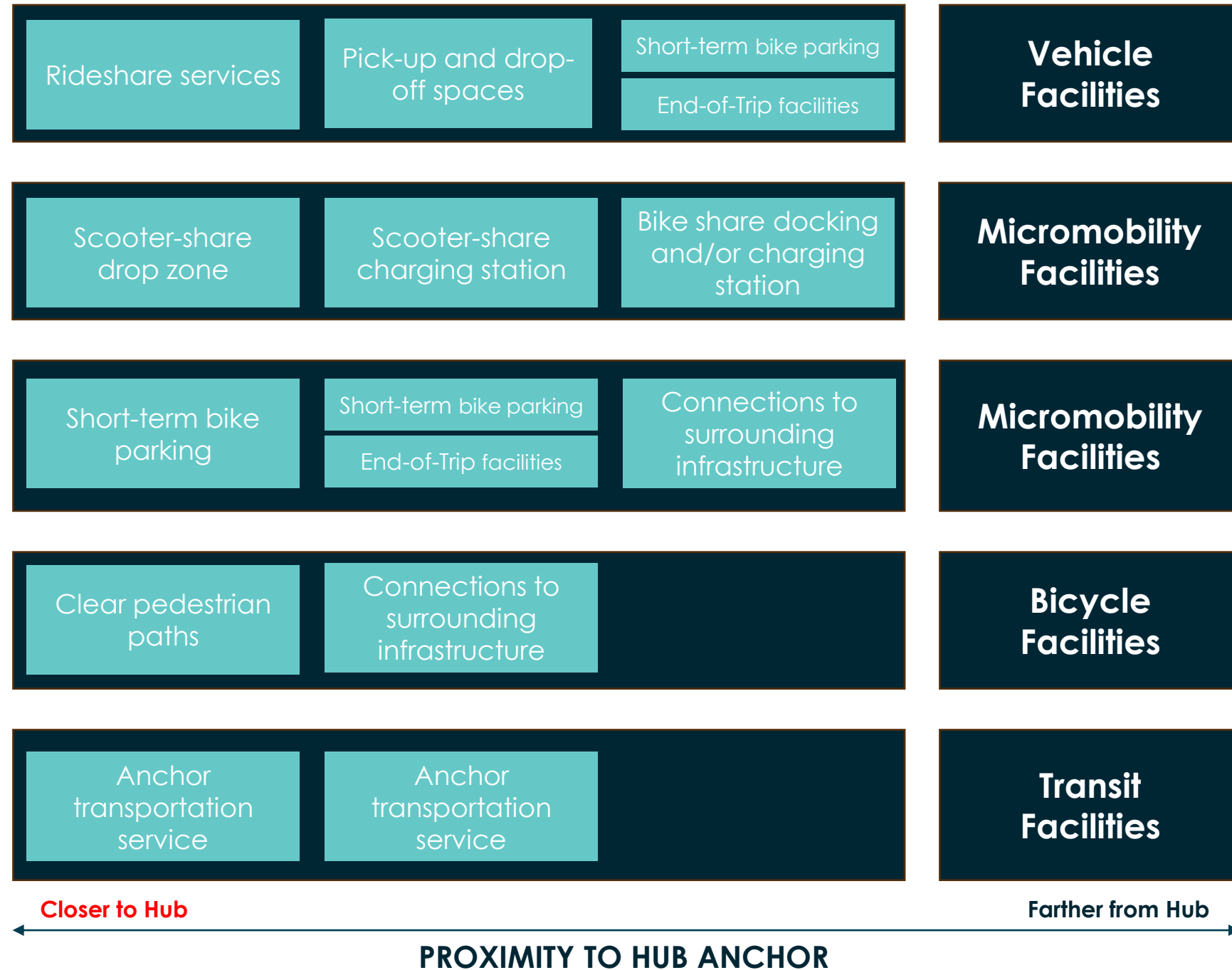
Design Considerations

- Access Hierarchy for Mobility Hubs
 - Recommend establishing a priority-proximity matrix to guide discussions on what to include in a mobility hub
 - Include elements and priority in relation to the center of the hub
 - This is helpful and can be referenced if stakeholders have differing opinions

ACCESS PRIORITY

Low Priority

High Priority



Kit of Parts

The Guide includes a **Kit of Parts Table**, which summarizes specific amenities for each of SCAG's six mobility hub types.

It includes a list of elements that are either highly recommended, recommended, or not applicable for that hub.

		Downtown Hub	Urban Hub	Emerging Urban Hub	Suburban & Rural Hub	Equity Hub	Institutional Hub
Category	Element						
Transit and Active Transportation Facilities	Train/rail	●	●	●	●	○	●
	Bus stop/station	●	●	●	○	●	●
	Carshare	●	●	●	▸	▸	▸
	EV parking	●	●	▸	▸	▸	●
	Shared micromobility zone	●	●	●	▸	▸	▸
	Pick-up and drop-off zone	●	●	●	●	●	●
	Bike facilities	●	●	●	▸	●	●
Access Facilities and Services	Covered bus shelters	●	●	▸	▸	●	▸
	Street furniture	●	●	▸	○	○	○
	Bathrooms	●	●	●	●	●	●
	Package delivery lockers	●	●	▸	▸	▸	●
	Water re-filling stations	●	●	▸	▸	●	●
Technology, Information, Wayfinding	Real-time travel information	●	●	●	▸	○	●
	Wayfinding signage	●	▸	▸	▸	▸	●
	Hub area maps, facilities info	●	●	▸	▸	▸	●
	Closed-circuit television cameras	●	●	●	●	●	●
	Public wi-fi and phone charging ports	●	●	▸	○	▸	▸
	Emergency telephone	●	●	●	●	●	●
Placemaking	Community art themes	●	●	●	●	●	●
	Lighting	●	●	●	●	●	●
	Landscaping	●	●	●	●	●	●
Footnotes:		● Highly Recommend ▸ Recommended ○ Not Applicable					
1-Mobility Hub owners offering carshare with EVs should anticipate providing EV charging infrastructure as well							
2-Amenities can include bike racks, bike lockers, and bike repair stations							
3- See the case study on Throne Labs on page X for an example of a public-private partnership							

Section 3. Implement the Hub

Paths to Implementation	Ongoing Adjustments	Operations & Maintenance	Funding Resources	Public-Private Partnerships
<ul style="list-style-type: none">• Pop-Ups• Quick Build• Full build-out• New Development• External Site Improvements	<ul style="list-style-type: none">• Managing Data at the Curb• Performance Metrics	<ul style="list-style-type: none">• Operations Control• Monitoring• Active Management	<ul style="list-style-type: none">• Regional• State• Federal	<ul style="list-style-type: none">• Operations and Maintenance (ie JCDecaux)• Design-Build• Design-Build-Operate-Maintain• Design-Build-Finance-Operate or Maintain

Case Studies

- 710 North Mobility Hubs Study
- MTC EV Car Share in Affordable Housing Pilot
- Advertiser-Supported Bus Stops (LADOT/Tranzito)
- East Boston GoHubs! Pilot Program

Case Study: SCAG's 710 North Mobility Hubs Study

SCAG, Los Angeles County Public Works, the Los Angeles Department of Transportation, California State University L.A., the city of South Pasadena, the city of Alhambra, and Metro partnered to create the [710 North Mobility Hubs Plan](#). This plan showcased how meaningful community engagement can help create conceptual plans of mobility hubs that incorporate stakeholder feedback.



- SCAG's Mobility Hub Guide includes four priority project conceptual designs, gap and opportunity analysis and a project cut sheet containing cost estimates.

- Burbank, Fontana, Moorpark, and Perris.



Partnerships

- Advice from the guide
 - Partnership roles and responsibilities should be defined for the planning, development, maintenance, and operations of the hub, and should include identifying the following:
 - Potential Partners and Stakeholders
 - Project Champions
 - Project Support
 - Approval Processes & Necessary Agreements (MOUs, contracts, etc)

Best Practice: Orange County Mobility Hub Strategy

In the Orange County Mobility Hub Strategy, the Orange County Transportation Authority (OCTA) describes how to define responsibilities between the different stakeholders involved in the creation and maintenance of a mobility hub. First, they recommend defining the area of governance and defining the party or parties involved in each area of governance. In Orange County, governance for mobility hubs involves five major stakeholder groups, including landowners, public transit operators, regional policy and funding agencies, major utility providers, and local community-based organizations. The following framing questions help to establish responsibilities and a governance structure:

1. What are the primary objectives of a mobility hub coalition?
2. Who can realistically provide the resources to lead the effort?
3. What historic precedents and relationships are there?

Examples of different governance scenarios are shown in the following table:

Governance Option	OCTA Level of Control	OCTA Level of Involvement	OCTA Level of Funding	Level of Harmonization across the region
OCTA MH Office	●●●	●●●	●●●	●●
OCMH JPA	●●	●●	●●	●●●
OCMH TMA	-	●	-	●●
OCMH WG	●	●	-	●

Legend

- High
- Medium
- Low
- None

Next Steps

- Share the Mobility Hub Guide
- Advance 1-2 conceptual designs further through implementation as part of the RPI Program
- Continue relationship building with LA28 Games Mobility Executives- Mobility Hub Subcommittee partners





VINE STREET MOBILITY HUB

Jennifer Nguyen, Riverside Transit Agency

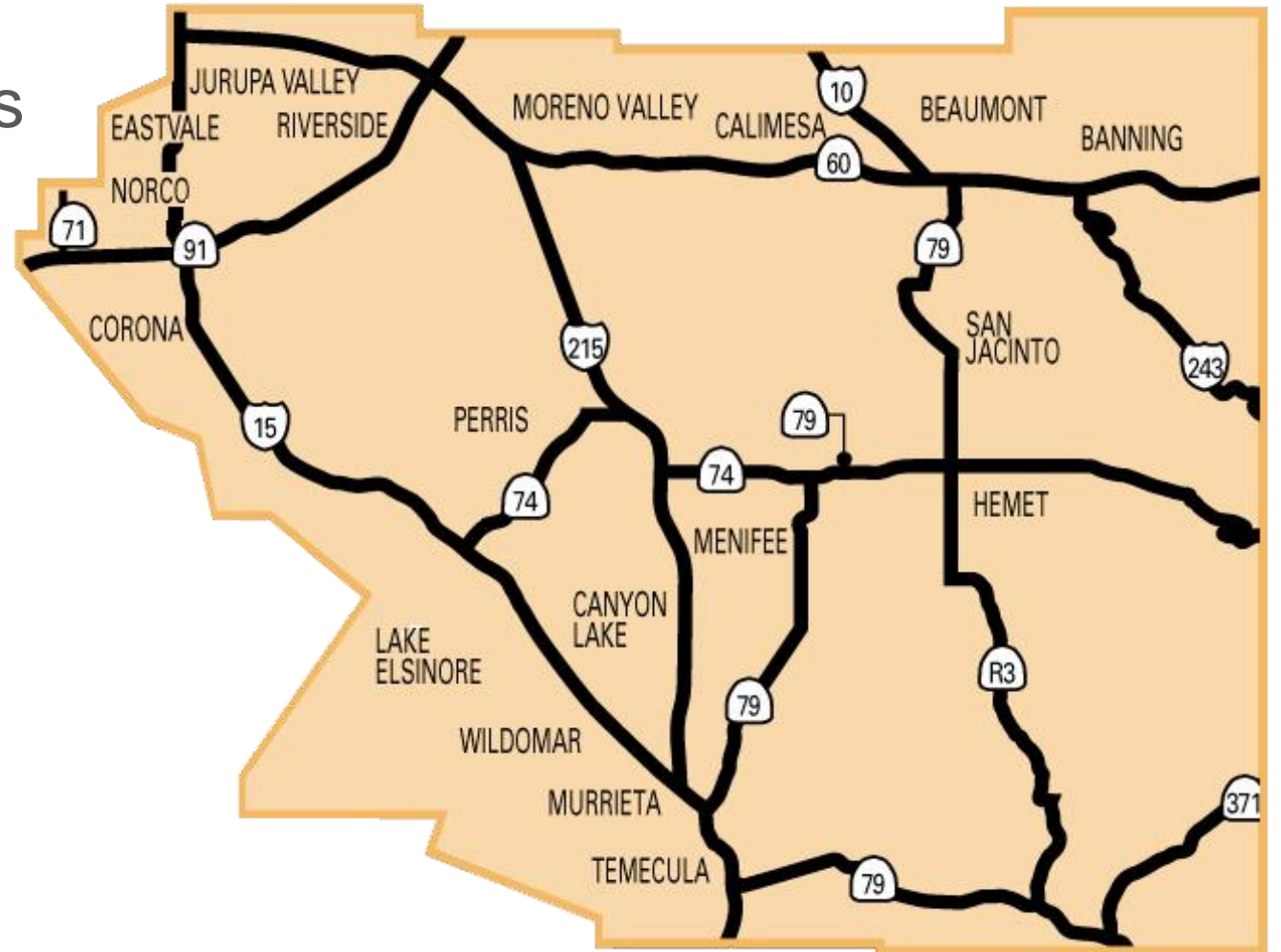
Riverside Transit Agency

Vine Street Mobility Hub

March 18, 2025

Riverside Transit Agency

- Established as a Joint Powers Agency on August 15, 1975
- Service began on March 16, 1977
- Service area: 2,500 square miles of western Riverside County
- 18 cities and Supervisorial Districts I, II, III and V



RTA Bus Services

Fixed Routes

- 32 Local fixed routes
- 3 CommuterLink routes
 - »Riverside County
 - »Orange County
 - »San Bernardino County



GoMicro Microtransit

Bus stop-to-bus stop, advanced reservation service in the Hemet & San Jacinto area.

Dial-A-Ride Service

Curb-to-curb, advanced reservation service for seniors age 65 and above and persons with disabilities.



Total Bus Fleet: 290 buses

TCC and AHSC Grants

- Funded by the State of California's Strategic Growth Council
- Grants encourage transformative, projects that reduce greenhouse gas (GHG) emissions and create healthier communities.
- Total award of \$31.2 million
- 14 partners



EASTSIDE CLIMATE COLLABORATIVE

CITY OF RIVERSIDE



City of Riverside Will Use \$31.2 Million Grant for Neighborhood Revitalization

Transformative Climate Communities and Affordable Housing and Sustainable Communities grants will help improve quality of life in city's Eastside neighborhood

Transit Connection Program



- 2,304 CommuterLink Monthly Passes
 - Issued to Entrada residents
 - One pass per unit for three years
 - Travel Training
- 4,356 CommuterLink Monthly Passes
 - Issued to residents of the project area
 - 3 year period (1,452 passes/year)
 - Managed by Wakeland Housing and Development Corporation
- Benefits of Passes
 - Access to free transportation that is safe, reliable and efficient
 - Increased access to higher education and job opportunities
 - Reduced congestion
 - Improved air quality

Vine Street Mobility Hub

Project Benefits:

- Increased safety, security and comfort while waiting for transfers
- Central location where passengers can transfer to regional routes
- Improved connection between bus and rail
- Increased ridership
- Reduced congestion improves public health
- Getting more people on public transportation improves air quality and reduces greenhouse gases, a key requirement of the grant program



Community Engagement Conceptual Plan

Completed

- Survey made available on RTA's website
- In-person surveying in downtown Riverside
- 215 surveys completed
- Door-to-Door Canvassing at over 2,500 homes
- 176 mailers delivered
- 2 Visioning Workshop



**VISIONING
WORKSHOP**
Please Join Us!!

TUESDAY, FEBRUARY 25, 2020



ONLINE PUBLIC WORKSHOP

Please join us to learn about the
Vine Street Mobility Hub Final Design

WE HEARD YOU AND APPRECIATE YOUR INPUT!

The Riverside Transit Agency (RTA) will hold its next Vine Street Mobility Hub online public workshop to share information.

The virtual workshop, which runs August 5-11, will be our fourth such event on the mobility hub planned near downtown Riverside across from the Riverside-Downtown Metrolink Station.

The workshop is a great resource for stakeholders, including the public, to learn more about this significant project and get updates on what we heard from the public during the workshops held in February and June 2020 and April 2021.

The virtual meeting room will focus on the following:

- Project Area
- Site Plan
- Station Elements
- Concepts/Designs
- Project Schedule
- Overview Sheet
- Feedback Station

Let's Keep Moving Together

Please take the short survey on the project website to provide your input and help RTA improve mobility throughout the region:
vinestmobilityhub.com



WHEN

DATE:

Thursday, August 5, 2021 through Wednesday,
August 11, 2021



WHERE

Visit the project website at
vinestmobilityhub.com to access this
workshop in the virtual meeting room.



Community Engagement Final Design

Completed

- Survey made available on RTA's website
- Social Media Notifications
- Email Notifications
- Door-to-Door Canvassing at over 2,500 homes
- 2 Public Workshops
 - April 15-20, 2021
 - August 5-11, 2021





Mobility Hub Site Plan





↑ Metrolink Station
← Passenger Drop-Off
Community Park

Vine Street Mobility Hub



Vine Street Mobility Hub





RTA
↑ Bus Bays M-P
← Bus Bays A-L
Security
Community Park









Lessons Learned

- Construction
 - Design-Build versus Design-Bid-Build
 - Keep detailed RFI and submittal logs
 - Accurate project schedule from the beginning
 - Liquidated damages
- Operations
 - Have strong partnerships
 - Have operations test it out beforehand
 - Onsite security
 - Make it more than just a mobility hub

Thank you

Jennifer Nguyen

Director of Planning

jnguyen@riversidetransit.com

(951) 565-5132



ON-CAMPUS MOBILITY HUB CASE STUDY

Yancey Modesto, Cal State Dominguez Hills



CSUDH

Master Plan





Master Plan

Mobility Hub



TOYOTA

KiNTO
EV Car Share
EV Bike Share



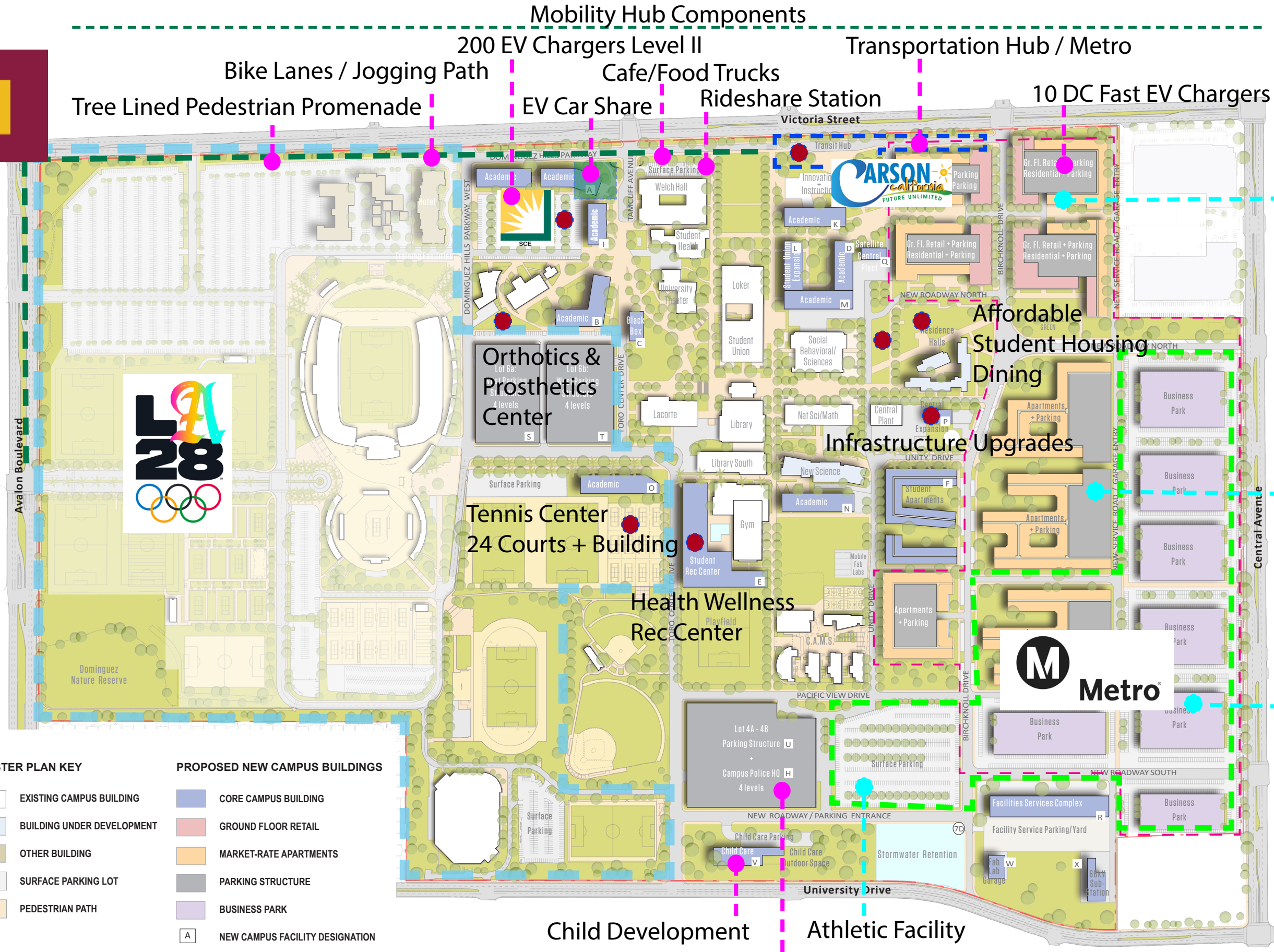
MASTER PLAN KEY

- EXISTING CAMPUS BUILDING
- BUILDING UNDER DEVELOPMENT
- OTHER BUILDING
- SURFACE PARKING LOT
- PEDESTRIAN PATH

PROPOSED NEW CAMPUS BUILDINGS

- CORE CAMPUS BUILDING
- GROUND FLOOR RETAIL
- MARKET-RATE APARTMENTS
- PARKING STRUCTURE
- BUSINESS PARK
- NEW CAMPUS FACILITY DESIGNATION
- UNIVERSITY VILLAGE AREA

- Current Projects
- Short Term Projects
- Long Term Projects



30-50 Year Plan

- Mixed-Use Development
- Medical Office Building
- Academic Health Programs
- Affordable Student Housing
- Faculty & Staff Housing
- University Village
- Community Services
- Entertainment
- Retail

Mobility Hub Components

- 200 EV Chargers Level II
- Cafe/Food Trucks
- Rideshare Station
- 10 DC Fast EV Chargers
- Bike Lanes / Jogging Path
- Tree Lined Pedestrian Promenade
- EV Car Share

Transportation Hub / Metro

- Child Development Center
- Parking Structure
- Athletic Facility

Affordable Student Housing Ph. 4 & Dining Commons Fall 2026 - 288 Beds – 350 Dining Seats





Orthotics and Prosthetics – Winter 2025 5,000 SF New Facility



ORTHOTICS & PROSTHETICS

csudh.edu/OandP



Orthotics and Prosthetics @ Parking Lot 6 South of College of Continuing Professional



CSUDH

Dymally Foundation
Open 2028 10,000 GSF



CSUDH
MERVYN M. DYMALLY
AFRICAN AMERICAN
POLITICAL & ECONOMIC INSTITUTE



CSUDH

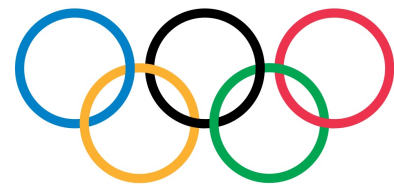
Dymally Foundation
Open 2028 10,000 GSF



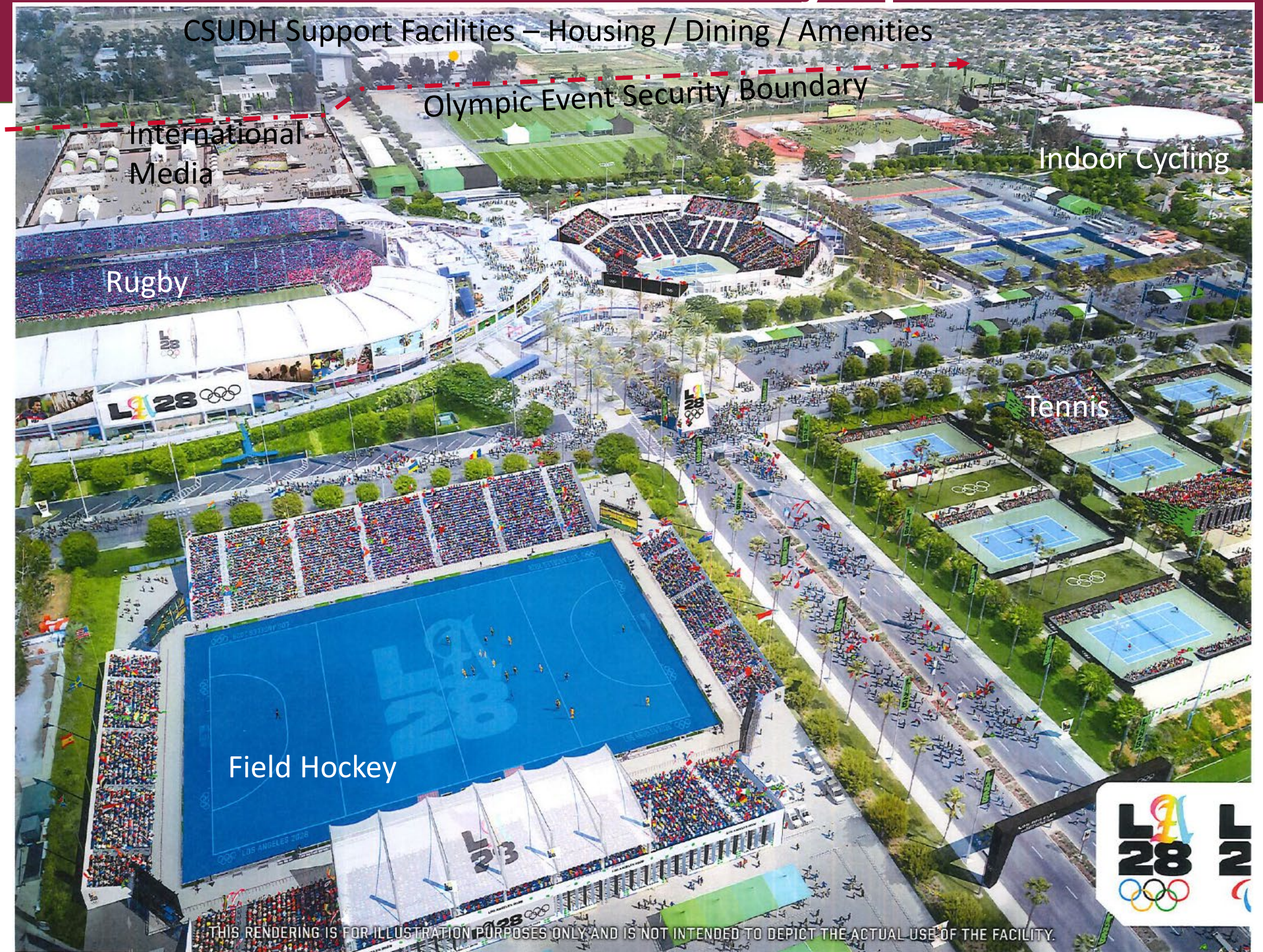
CSUDH
MERVYN M. DYMALLY
AFRICAN AMERICAN
POLITICAL & ECONOMIC INSTITUTE

DYMALLY





Dignity Health
Sports Park







CONCEPT PLAN

1/64" = 1'-0"



PAGE
1 OF 3



03/19/2024

CSUDH

CALIFORNIA STATE UNIVERSITY, DOMINGUEZ HILLS

11 communities | 382
neighborhoods | 632,000 residents

Mobility for All

CREST 1.0

CENTER FOR RESILIENT,
EQUITABLE & SUSTAINABLE
TRANSPORTATION



Cal State University Dominguez Hills Multi-Modal Transit Station Conceptual Plan

CSUDH

Mobility For All

CSUDH

CALIFORNIA STATE UNIVERSITY, DOMINGUEZ HILLS

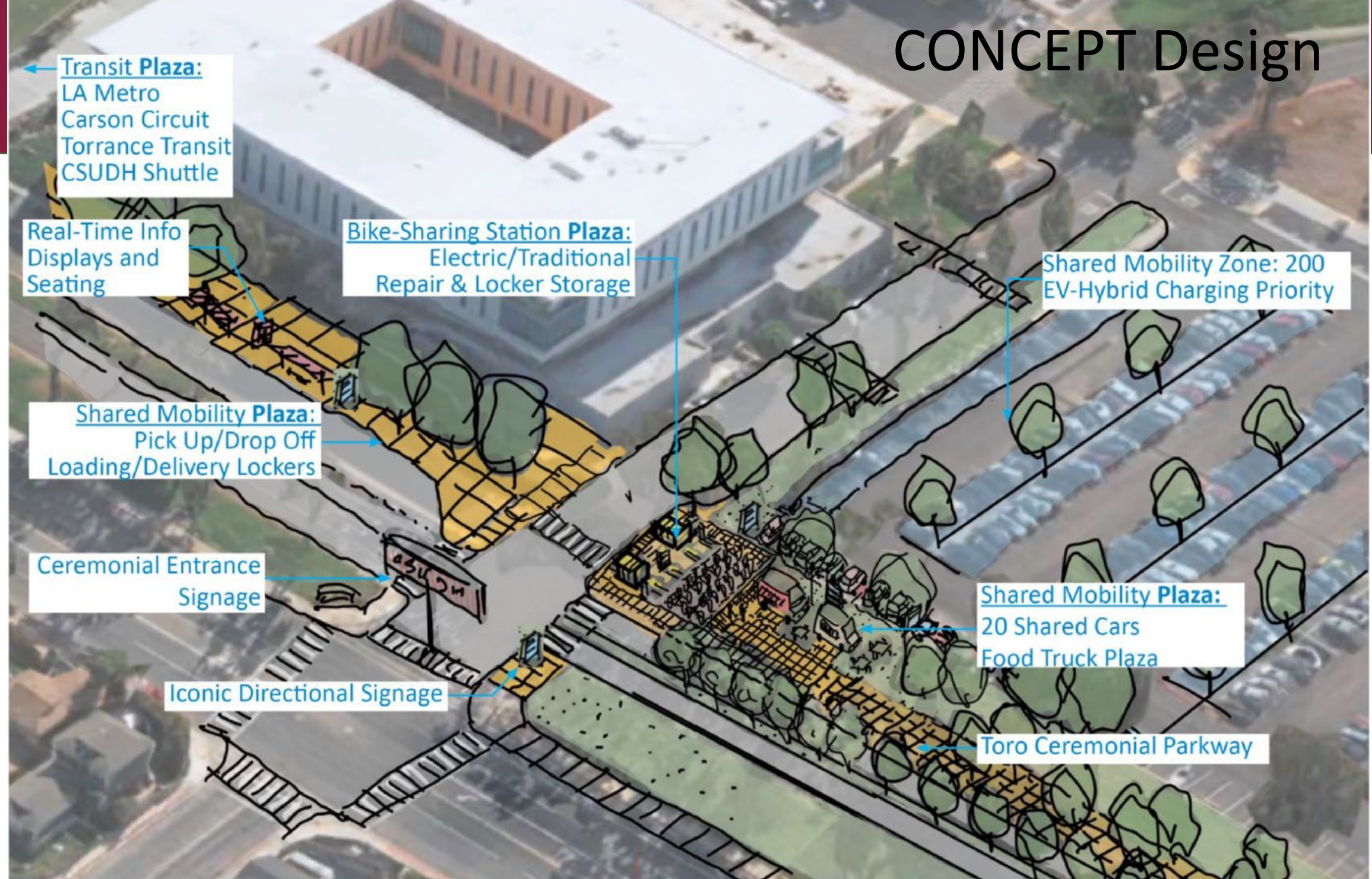
11 communities | 382
neighborhoods | 632,000 residents

Mobility for All

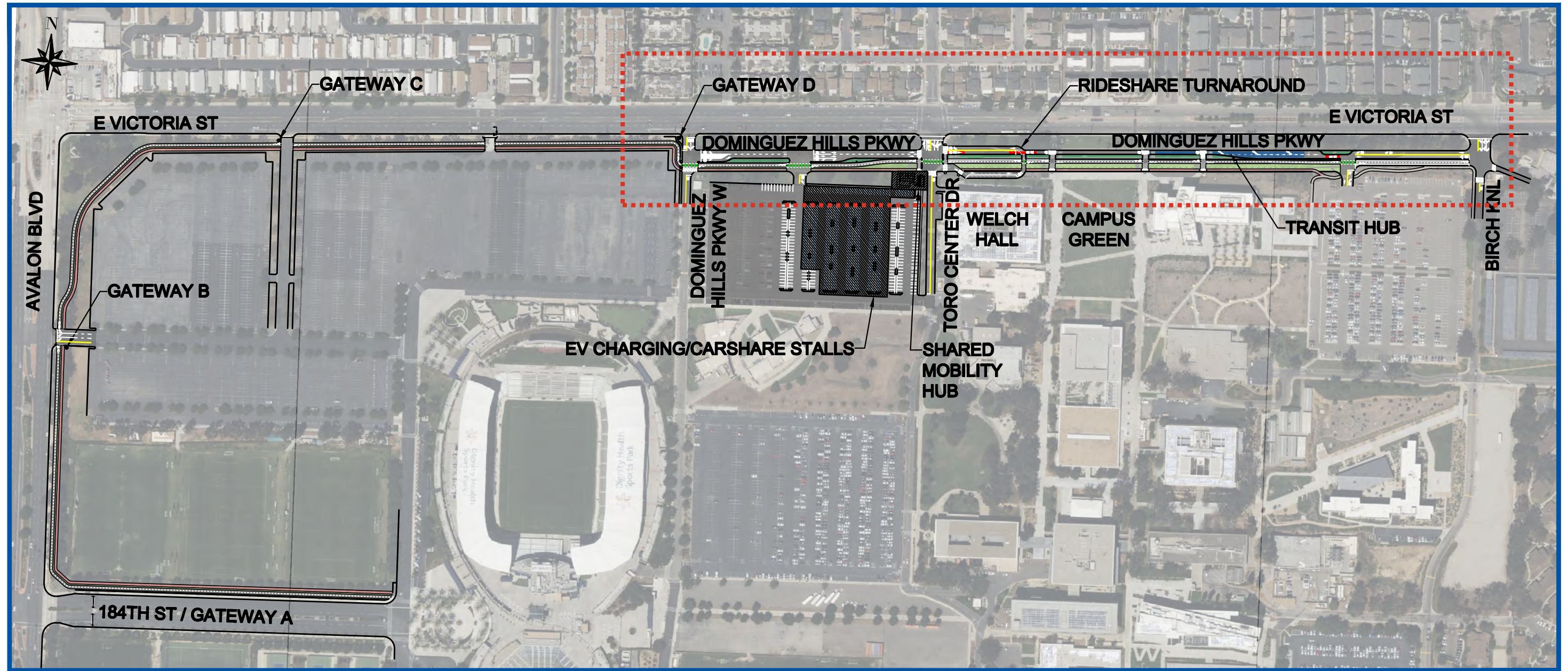
CREST 1.0

CENTER FOR RESILIENT,
EQUITABLE & SUSTAINABLE
TRANSPORTATION

CONCEPT Design

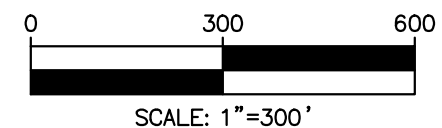


Cal State University Dominguez Hills Shared-Mobility Detailed Conceptual Plan

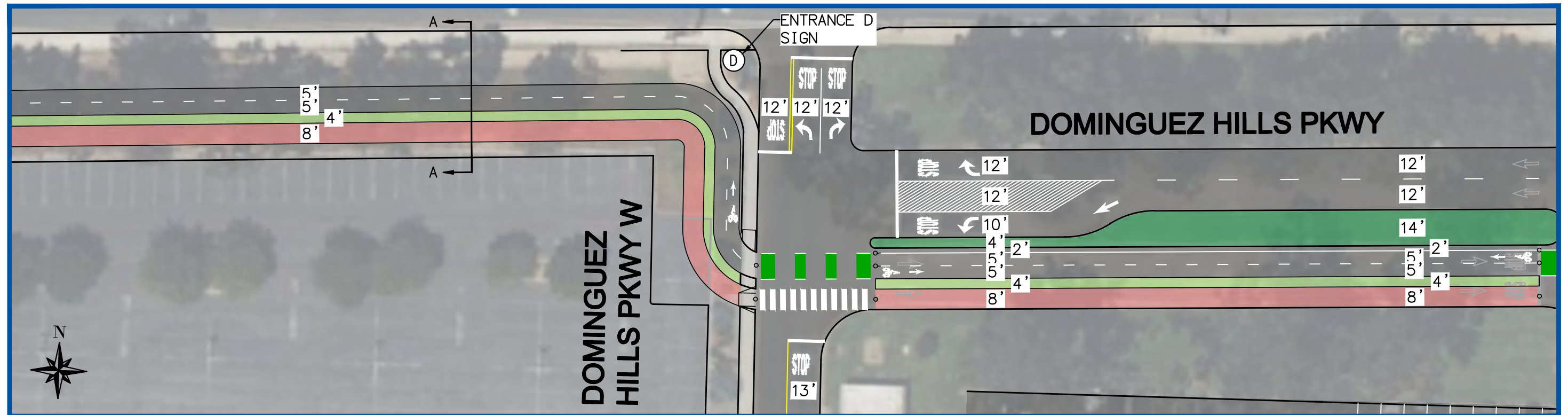


LEGEND

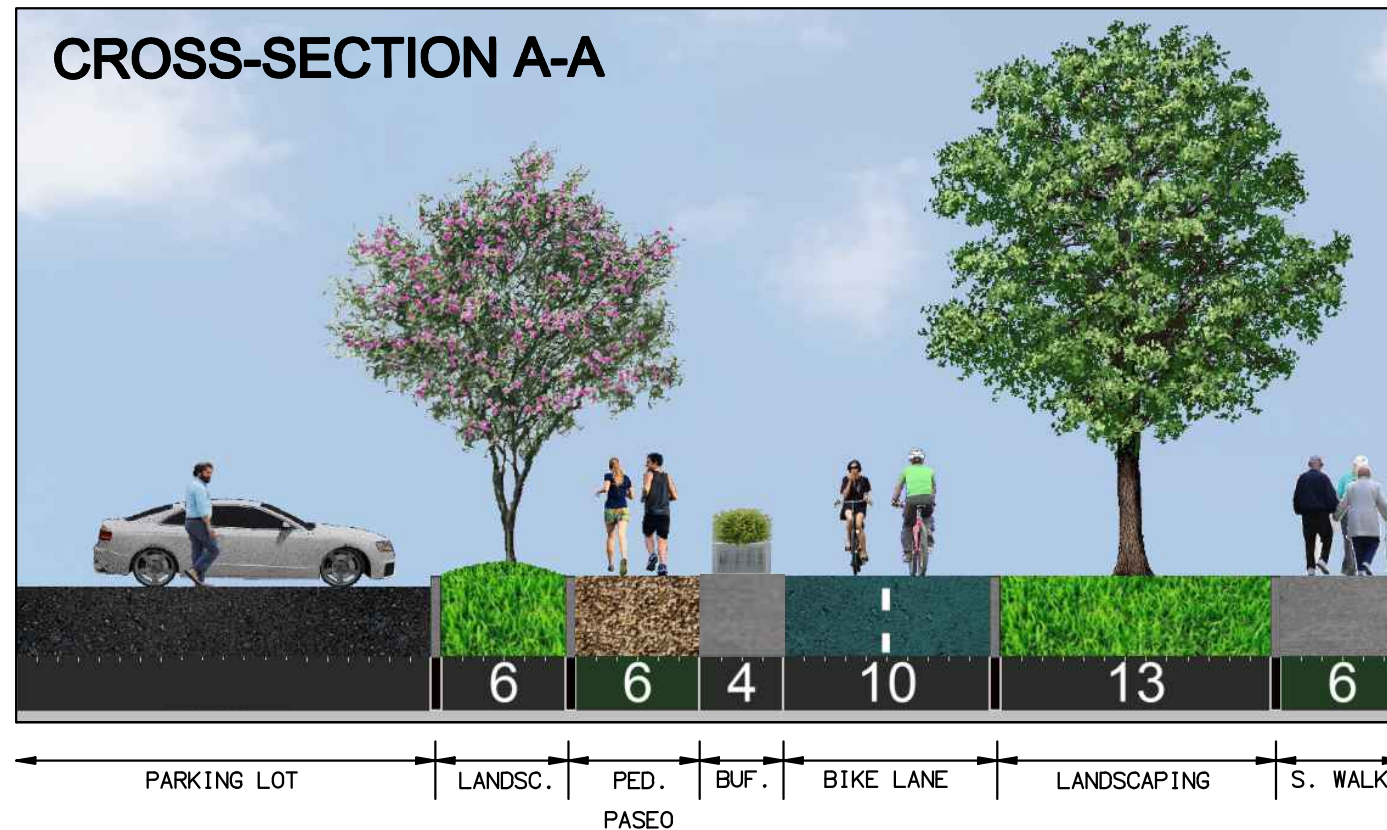
	CURB		TRANSIT HUB		EXISTING CURB RAMP
	PROPOSED STRIPE		SIDEWALK		PROPOSED CURB RAMP
	BIKE LANE CONFLICT AREA		RAISED MEDIAN		GATED DRIVEWAY
	BOLLARDS		PEDESTRIAN PASEO		EMERGENCY SIGNAL
			PLANTING STRIP		



CSU Dominguez Hills Concept Plan - Option 1

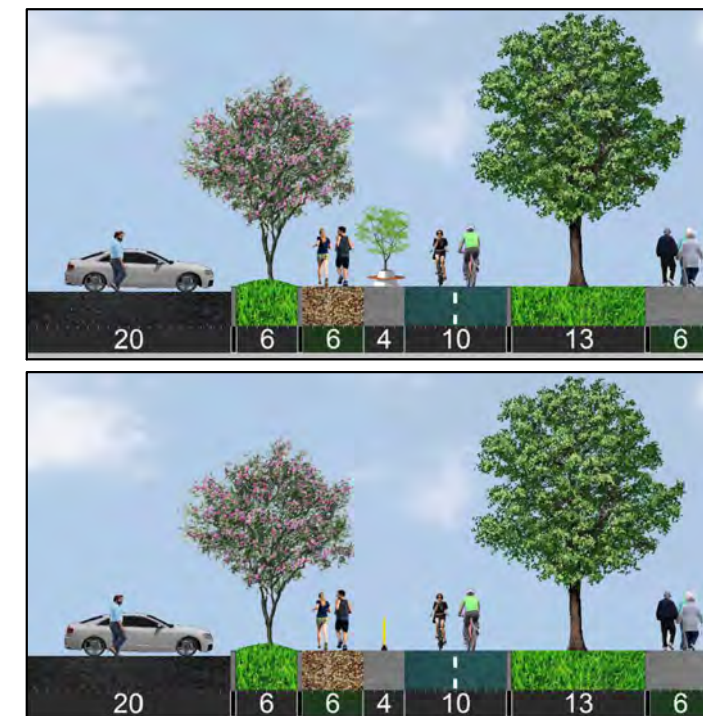


CROSS-SECTION A-A



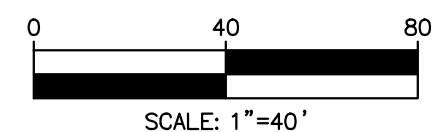
LEGEND

	CURB		SIDEWALK		EXISTING CURB RAMP
	PROPOSED STRIPE		RAISED MEDIAN		PROPOSED CURB RAMP
	BIKE LANE CONFLICT AREA		PEDESTRIAN PASEO		GATED DRIVEWAY
	BOLLARDS		PLANTING STRIP		

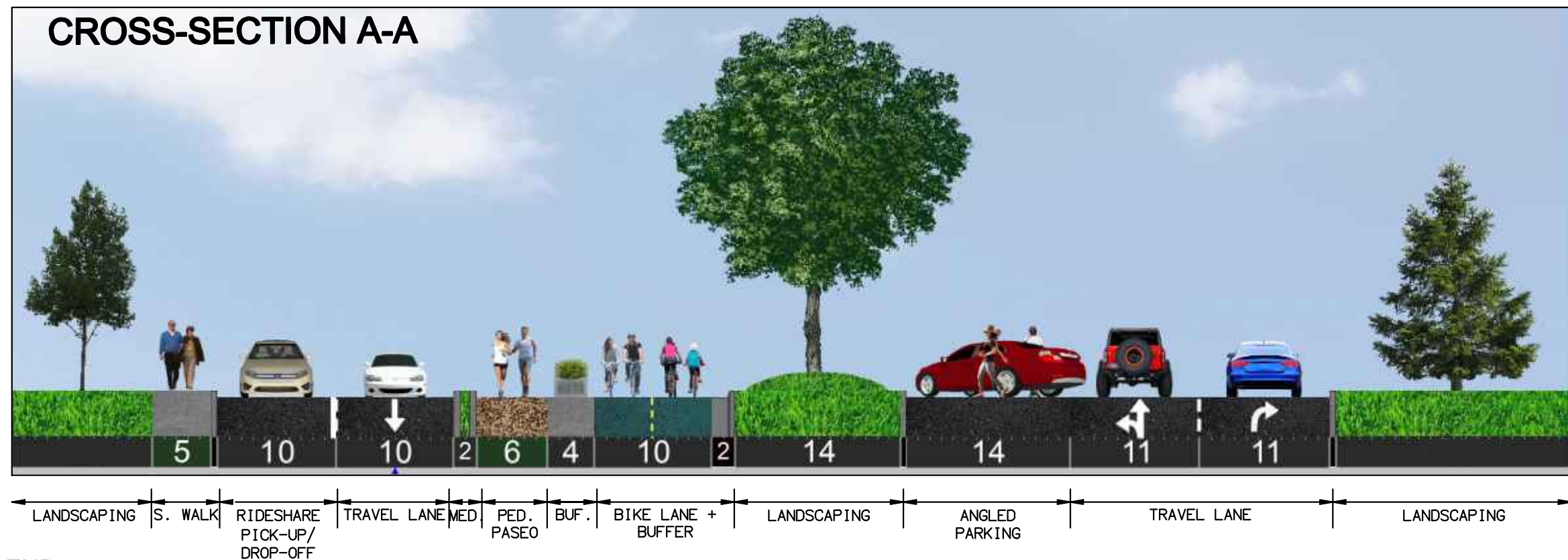
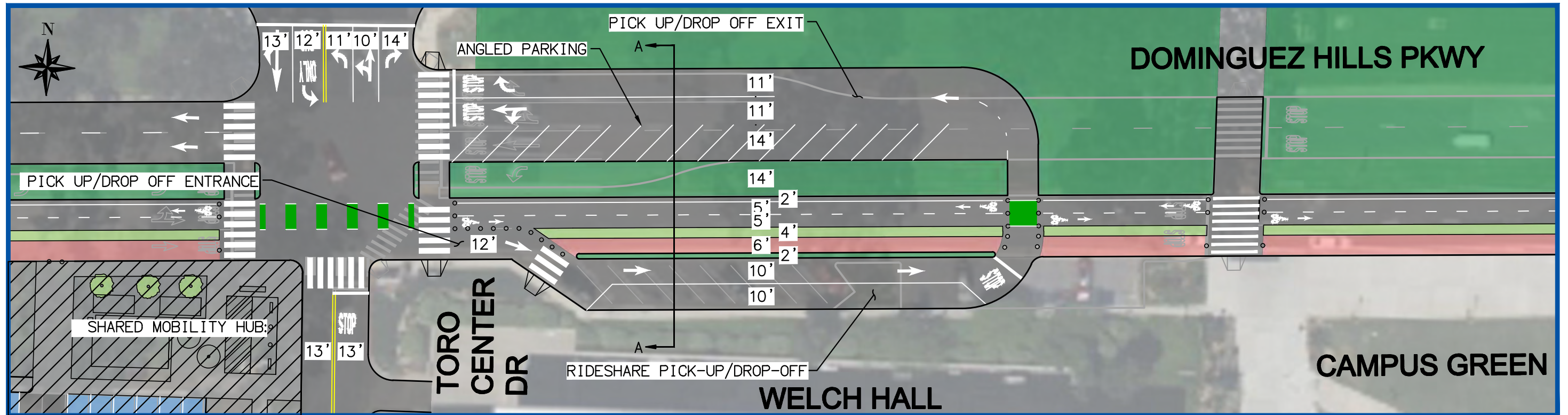


ALTERNATIVE BUFFER
OPTION - BENCH

ALTERNATIVE BUFFER
OPTION - BOLLARD

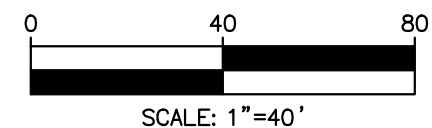


**CSU Dominguez Hills
Gateway D - Option 1 & 2**

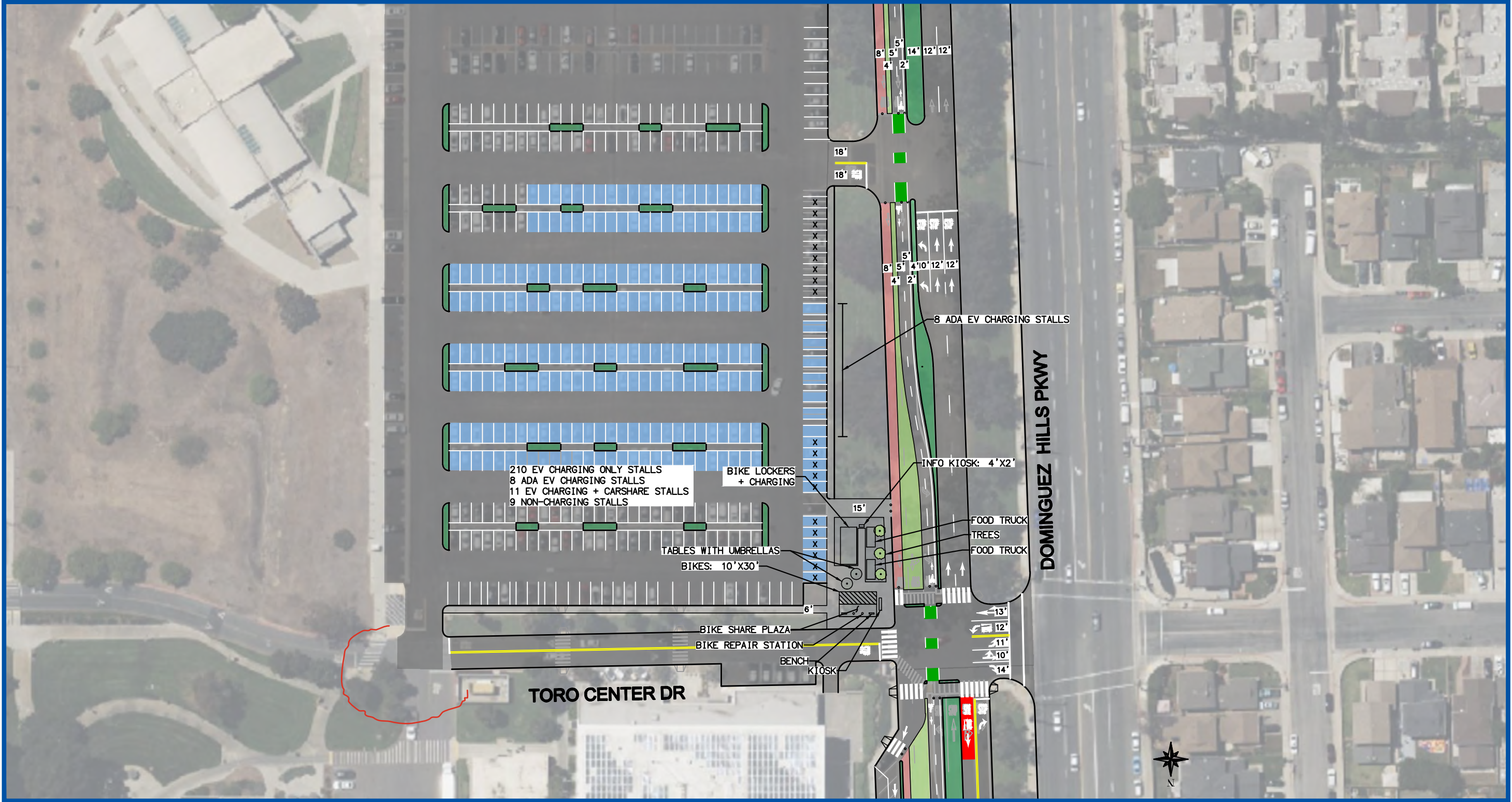


LEGEND

	CURB		SIDEWALK		EXISTING CURB RAMP
	PROPOSED STRIPE		RAISED MEDIAN		PROPOSED CURB RAMP
	BIKE LANE CONFLICT AREA		PEDESTRIAN PASEO		GATED DRIVEWAY
	BOLLARDS		PLANTING STRIP		

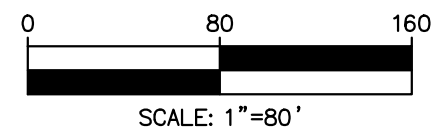


**CSU Dominguez Hills
Turnaround - Option 2**



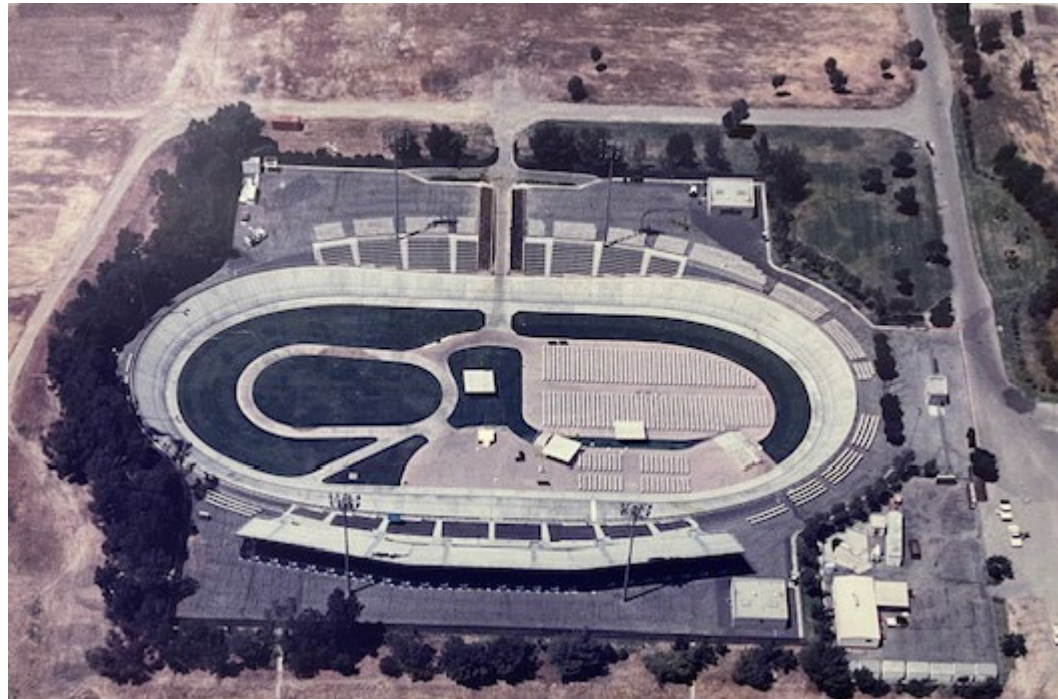
LEGEND

	CURB		EV CHARGING		CARSHARE
	PROPOSED STRIPE		SIDEWALK		EXISTING CURB RAMP
	BIKE LANE CONFLICT AREA		RAISED MEDIAN		PROPOSED CURB RAMP
	BOLLARDS		PEDESTRIAN PASEO		GATED DRIVEWAY
			PLANTING STRIP		



CSU Dominguez Hills Ped/Bike/Transit Mobility Hub

for the Games of the XXIII Olympiad



Campus of California State University Dominguez Hills with Velodrome located in lower part of the image, ca 1983. Photo courtesy of Archives & Special Collections, University Library, California State University Dominguez Hills.



Master Plan

Mobility Hub



TOYOTA

KINTO
EV Car Share
EV Bike Share



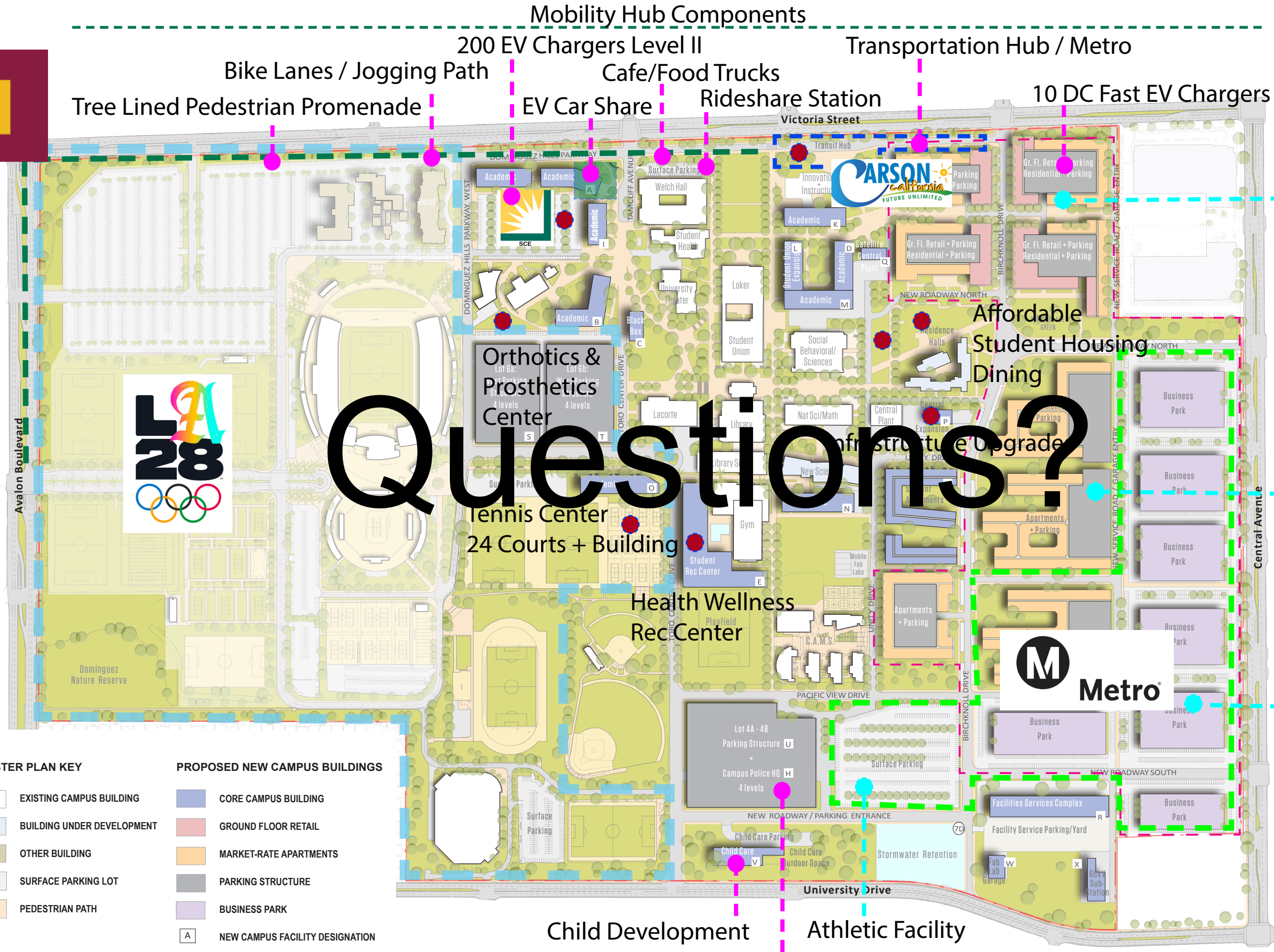
MASTER PLAN KEY

- EXISTING CAMPUS BUILDING
- BUILDING UNDER DEVELOPMENT
- OTHER BUILDING
- SURFACE PARKING LOT
- PEDESTRIAN PATH

PROPOSED NEW CAMPUS BUILDINGS

- CORE CAMPUS BUILDING
- GROUND FLOOR RETAIL
- MARKET-RATE APARTMENTS
- PARKING STRUCTURE
- BUSINESS PARK
- NEW CAMPUS FACILITY DESIGNATION
- UNIVERSITY VILLAGE AREA

- Current Projects
- Short Term Projects
- Long Term Projects



30-50 Year Plan

- Mixed-Use Development
- Medical Office Building
- Academic Health Programs
- Affordable Student Housing
- Faculty & Staff Housing
- University Village
- Community Services
- Entertainment
- Retail

Questions?



LADOT MOBILITY HUB PROGRAM

Salvador Gutierrez, Supervising Transportation Planner for LADOT

Gene Oh, CEO/Co-Founder, Tranzito



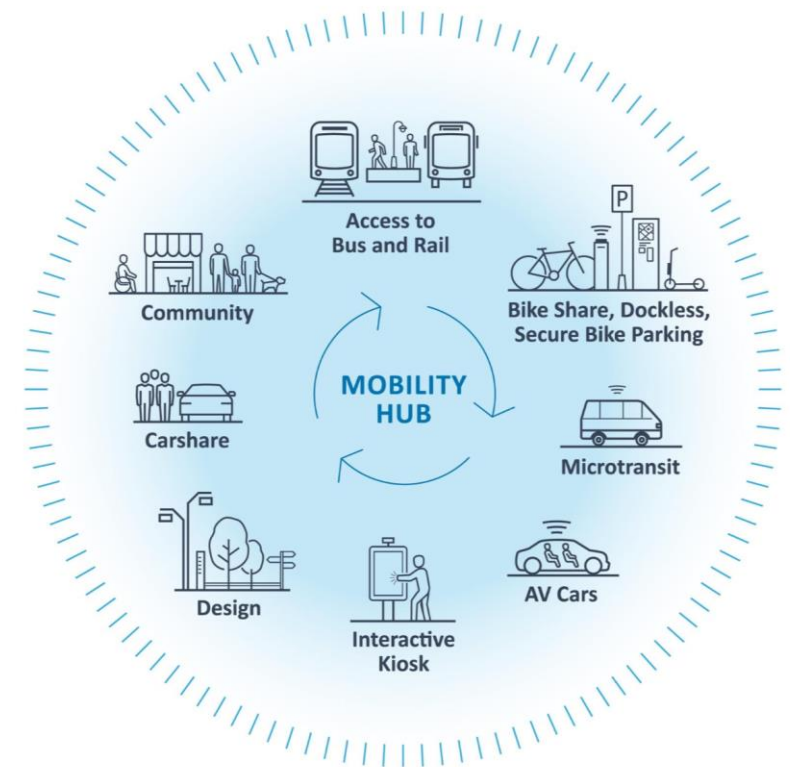
Mobility Hubs in Los Angeles

Salvador Gutierrez
Commercial Rideshare and Mobility Division
March 18, 2025

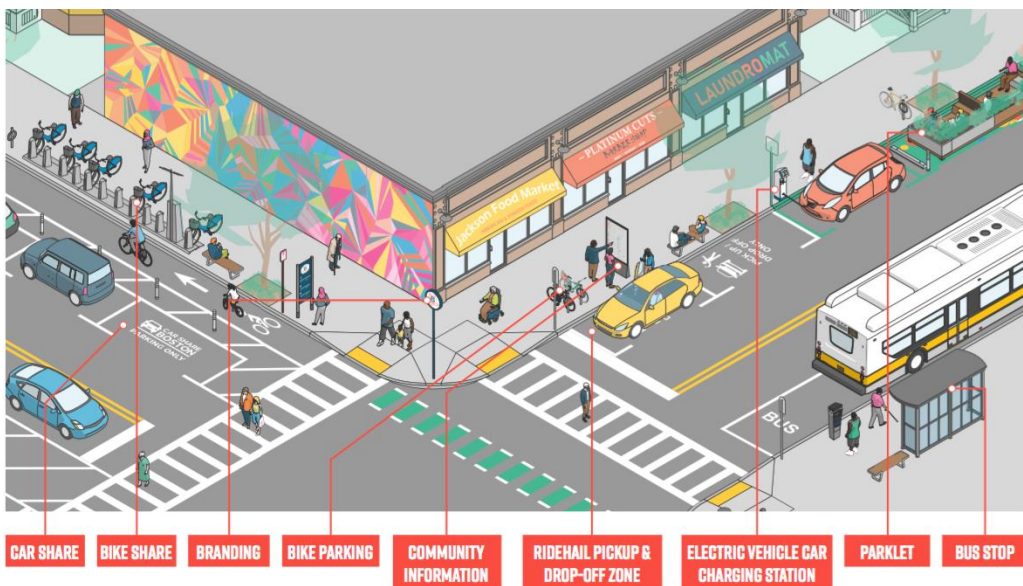


Integrated Mobility Hubs Project

- 2009 Metro Call for Projects Congestion Mitigation and Air Quality Improvement
- 2010 Job Access & Reverse Commute proposal
- 2014 Comprehensive Needs Assessment
- 2014 Operating Plan
- 2019 Request for Proposal Released
- 2022 Metro Board Approved Measure M funds
- 2024 Contract Execution
- 2024 Technical Advisory Committee formed



Project Vision



Provide people more options to get around.

Turn traditional and modern transportation into a seamless experience.

Help people that are unfamiliar with alternative modes to be comfortable to new modes.

Eliminate the unknown for the first mile/last mile for riders.

Provide people with Mobility Hubs to meet all their transportation needs.

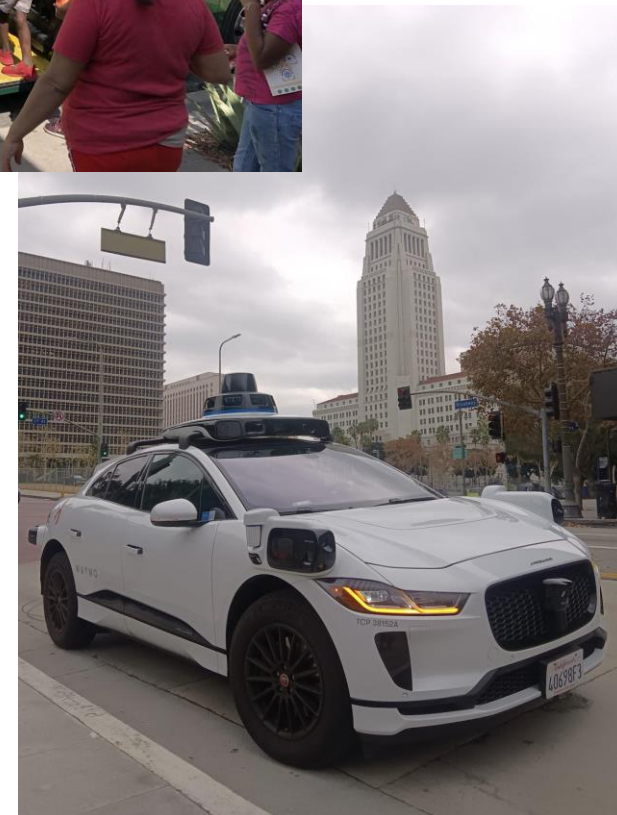
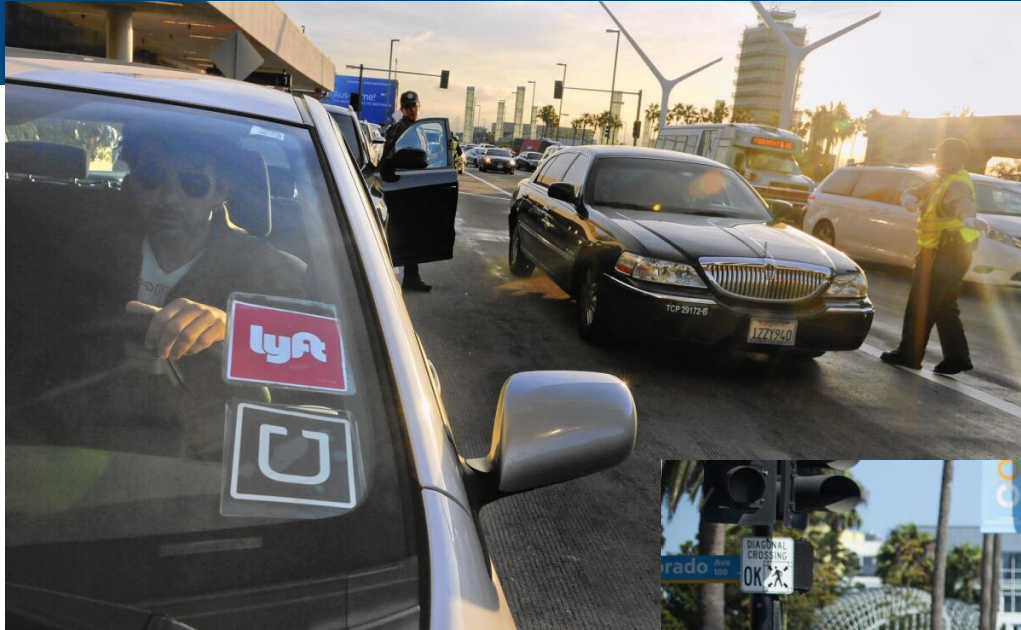
Hub

13 Primary Mobility Hubs
(5 – DTLA)
(5 – Hollywood)
(3 – Long Beach, Secure
Parking Only)

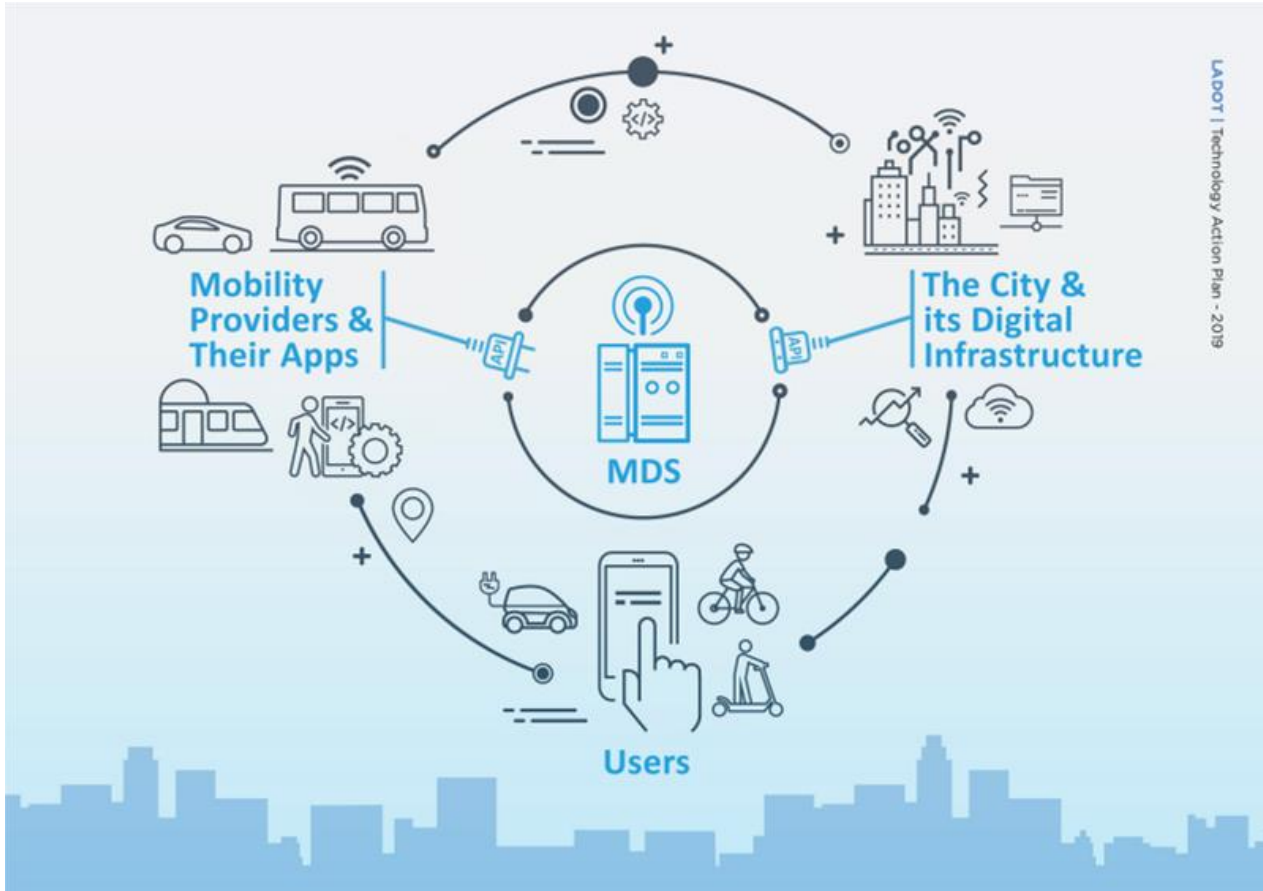
85 Satellite Hubs



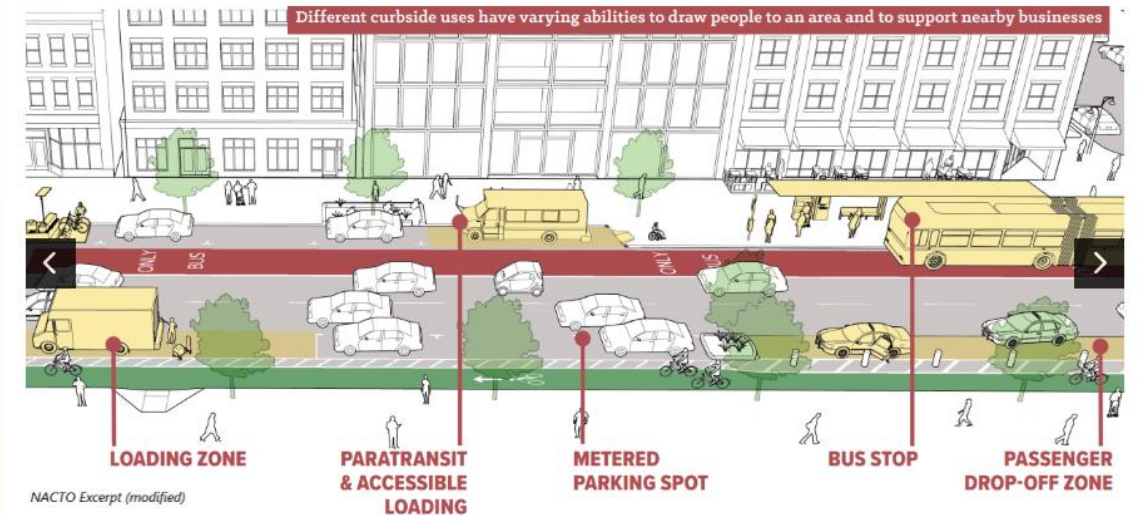
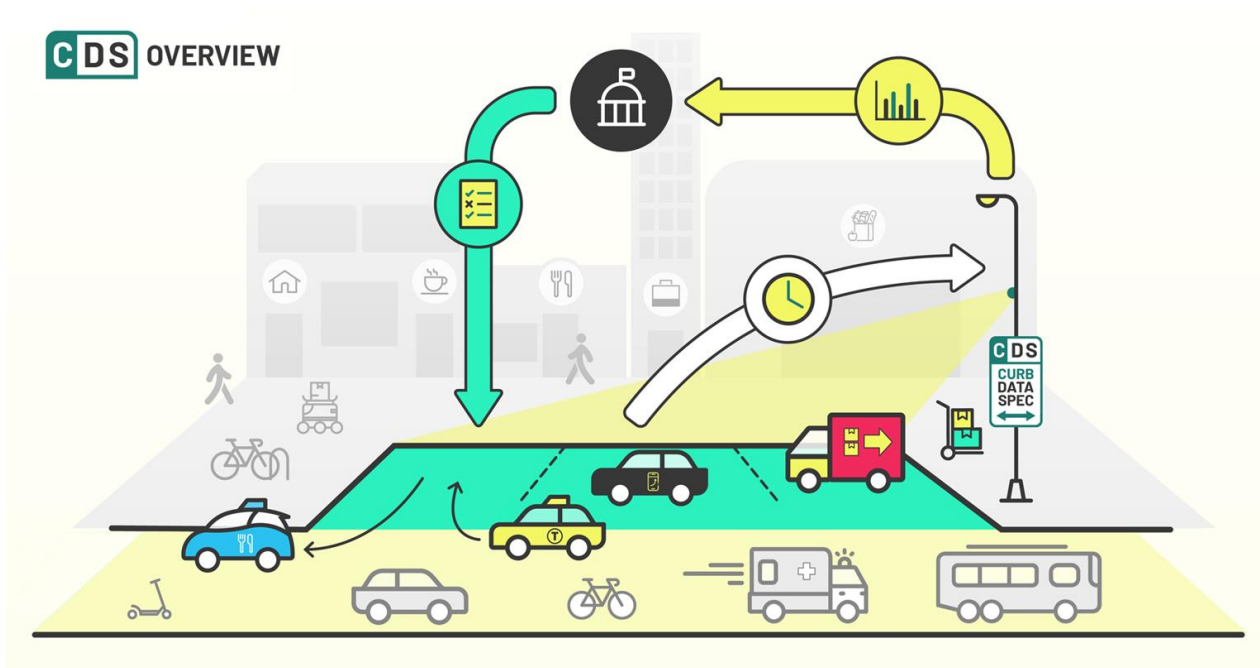
Mobility is always evolving



Mobility Data Specification & Digital Infrastructure



Curb Data Specification and Monitoring Curb



Los Angeles hosting numerous international large scale events



Opportunity for Innovative Mobility Solutions

- Data informs cities how to plan for infrastructure improvements and regulate the curb based on demand
- Overall, the Integrated Mobility Hubs Project will inform how the City defines mobility hubs and how we prioritize locations
- Strategically coordinate the City's infrastructure projects and LADOT's initiatives and work streams



Curb Management / Flex Mobility Zones

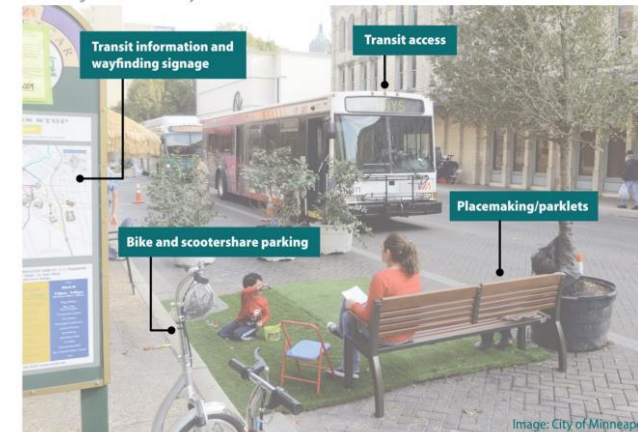


Image: City of Minneapolis

Flexibility



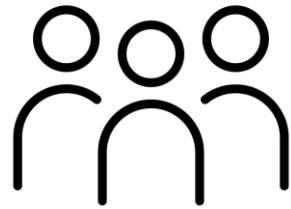
- Flex mobility zone:
- Rideshare loading zone
 - Passenger pickup/dropoff
 - Delivery unloading
 - Food dropoff
 - Time-limited parking

Image: Steve Ringman / The Seattle Times

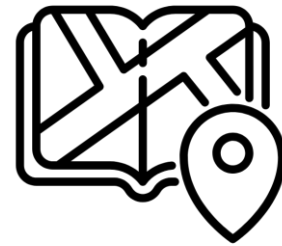
Challenges



Grant
requirements



Governance



Geography



Funding

Solutions

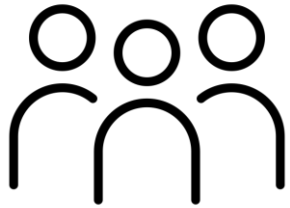


Grant
requirements



Capitalize OpEx expenses
“Product-ize” staffing expenses

Solutions



Governance



Public

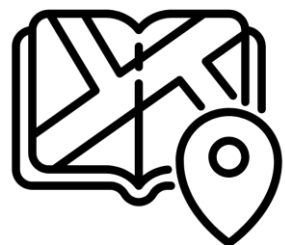


Non-Profit

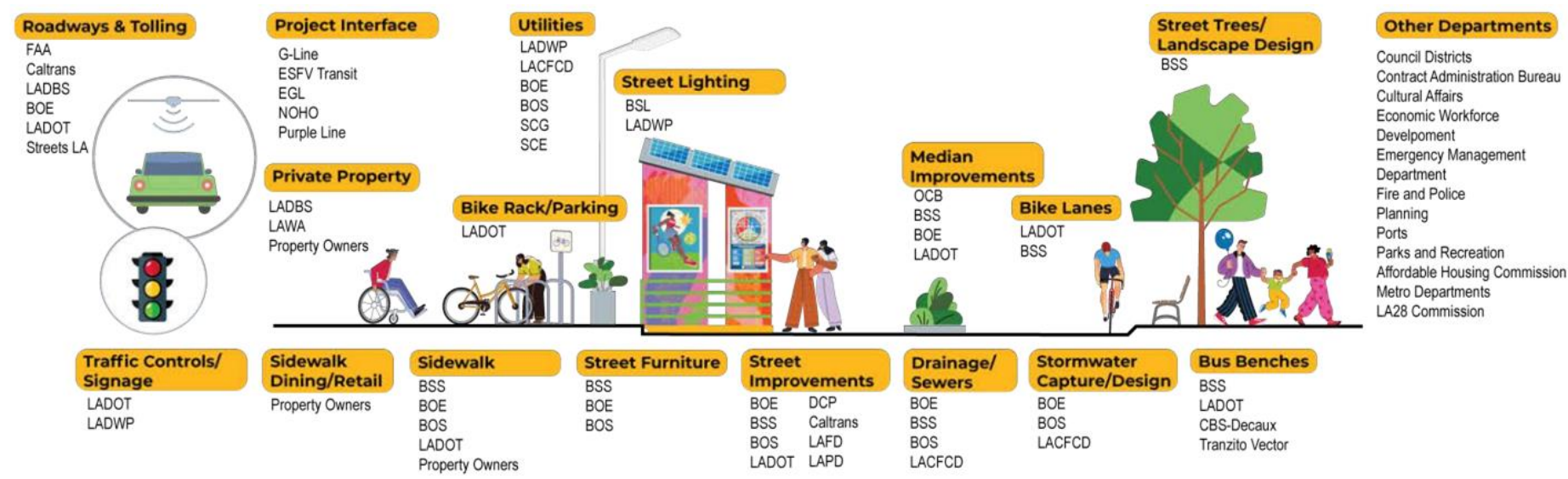


Private

Solutions



Geography



Get to Yes

Solutions



Funding



Design-Build-
Operate-Maintain



Pilot of Pilots



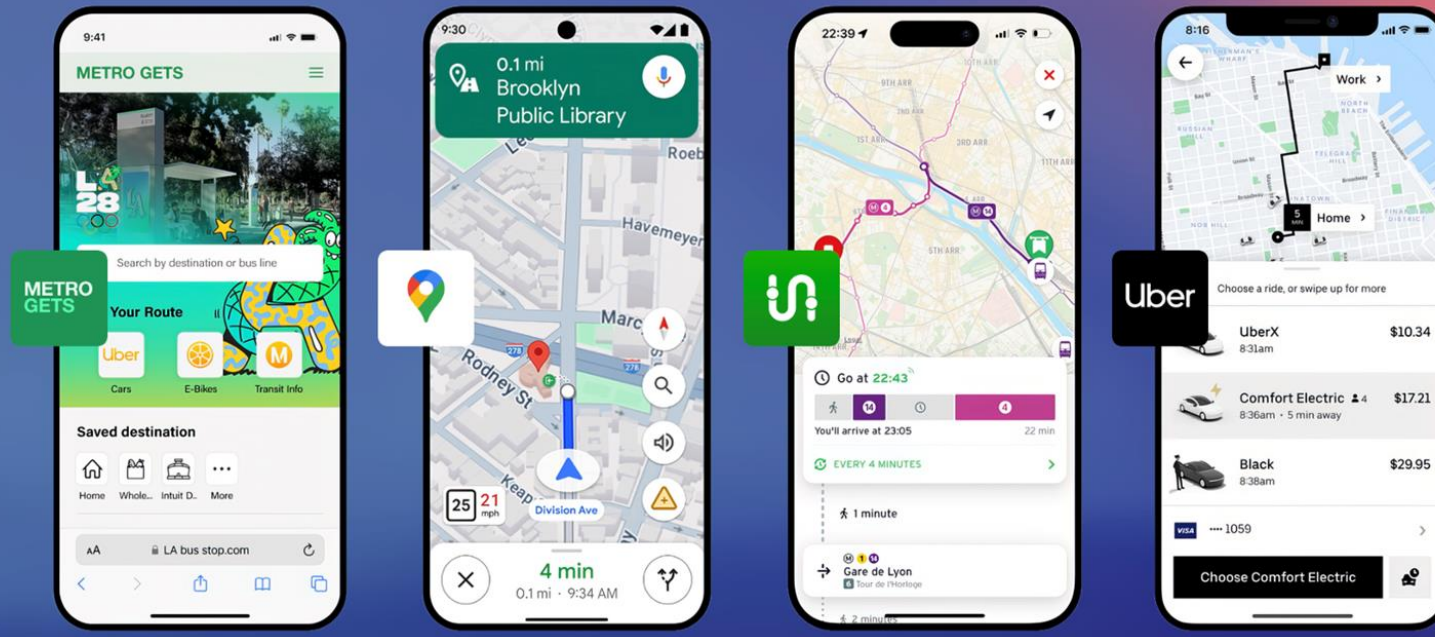
Grants SOP

Solutions - Get Creative and Integrate



Solutions - Get Creative and Integrate

Many Apps Working Together



Tell us how we did!

Take a quick 2-minute survey to help us improve future Toolbox Tuesdays!

